



ELECTRONIC COPY

LABORATORY GROWN DIAMOND REPORT

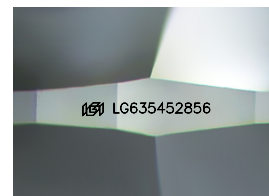
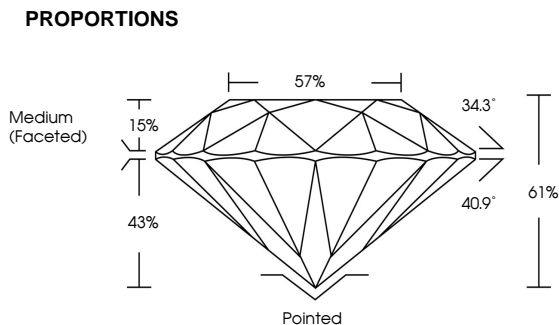
LG635452856
Report verification at igi.org

May 16, 2024	
IGI Report Number	LG635452856
Description	LABORATORY GROWN DIAMOND
Shape and Cutting Style	ROUND BRILLIANT
Measurements	7.80 - 7.84 X 4.77 MM
GRADING RESULTS	
Carat Weight	1.76 CARAT
Color Grade	D
Clarity Grade	VVS 2
Cut Grade	IDEAL

ADDITIONAL GRADING INFORMATION

Polish	EXCELLENT
Symmetry	EXCELLENT
Fluorescence	NONE
Inscription(s)	 LG635452856

Comments: HEARTS & ARROWS
This Laboratory Grown Diamond was created by
Chemical Vapor Deposition (CVD) growth process and
may include post-growth treatment.
Type IIa



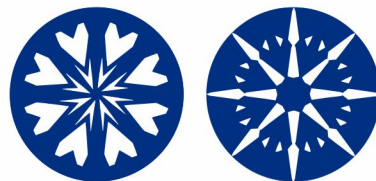
Sample Image Used

COLOR

D E F G H I J Faint Very Light Light

CLARITY

IF	VVS ¹⁻²	VS ¹⁻²	SI ¹⁻²	I ¹⁻³
Internally Flawless	Very Very Slightly Included	Very Slightly Included	Slightly Included	Included

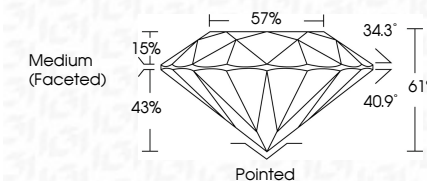


www.igi.org

DIAMOND REPORT



May 16, 2024	
IGI Report Number	LG635452856
Description	LABORATORY GROWN DIAMOND
Shape and Cutting Style	ROUND BRILLIANT
Measurements	7.80 - 7.84 X 4.77 MM
GRADING RESULTS	
Carat Weight	1.76 CARAT
Color Grade	D
Clarity Grade	VVS 2
Cut Grade	IDEAL



ADDITIONAL GRADING INFORMATION

Polish	EXCELLENT
Symmetry	EXCELLENT
Fluorescence	NONE
Inscription(s)	 LG635452856

Comments: HEARTS & ARROWS
This Laboratory Grown Diamond was created by
Chemical Vapor Deposition (CVD) growth process and
may include post-growth treatment.
Type IIa



© IGI 2020, International Gemological Institute

FD - 10 20



THIS DOCUMENT WAS PRODUCED WITH THE FOLLOWING SECURITY MEASURES: SPECIAL DOCUMENT PAPER, INK SCREENS, WATERMARK, BACKGROUND DESIGNS, HOLOGRAM AND OTHER SECURITY FEATURES NOT LISTED AND DO EXCEED DOCUMENT SECURITY INDUSTRY GUIDELINES

May 16, 2024
IGI Report No LG635452856
ROUND BRILLIANT

7.80 - 7.84 X 4.77 MM

7.80 - 7.84 X 4.77 MM
Carat Weight
1.76 CARAT

Color Grade	D
-------------	---

Clarity Grade	WS 2
FL	
IF	
VVS	
VS	
SI	
I	
P	

Out Grade	IDEAL
100%	100%
90%	90%
80%	80%
70%	70%
60%	60%
50%	50%
40%	40%
30%	30%
20%	20%
10%	10%
0%	0%

Depth	61%
Table	57%

Table	67%
Girdle	Medium (Faceted)

Culet	Pointed
Polish	Excellent

Polish	EXCELLENT
Symmetry	EXCELLENT

Fluorescence	NONE
1	1
2	2
3	3
4	4
5	5
6	6
7	7
8	8
9	9
10	10
11	11
12	12
13	13
14	14
15	15
16	16
17	17
18	18
19	19
20	20
21	21
22	22
23	23
24	24
25	25
26	26
27	27
28	28
29	29
30	30
31	31
32	32
33	33
34	34
35	35
36	36
37	37
38	38
39	39
40	40
41	41
42	42
43	43
44	44
45	45
46	46
47	47
48	48
49	49
50	50
51	51
52	52
53	53
54	54
55	55
56	56
57	57
58	58
59	59
60	60
61	61
62	62
63	63
64	64
65	65
66	66
67	67
68	68
69	69
70	70
71	71
72	72
73	73
74	74
75	75
76	76
77	77
78	78
79	79
80	80
81	81
82	82
83	83
84	84
85	85
86	86
87	87
88	88
89	89
90	90
91	91
92	92
93	93
94	94
95	95
96	96
97	97
98	98
99	99
100	100

Inscription(s)	191 LG635452856

Comments:
HEARTS & ARROWS

HEADS & ARROWS
This Laboratory Grown Diamond was created by Chemical Vapor Deposition

created by chemical vapor deposition (CVD) growth process and may include post-growth treatment

Type IIa
post-growth treatment.