

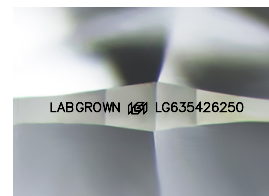
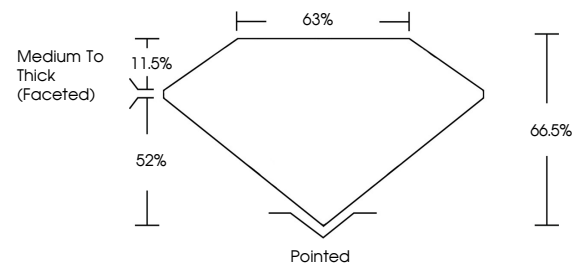


**ELECTRONIC COPY**

## LABORATORY GROWN DIAMOND REPORT

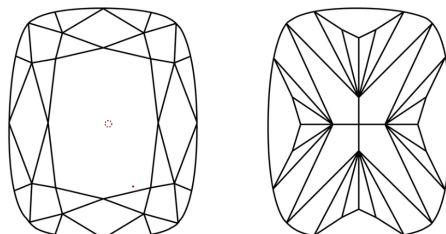
LG635426250  
Report verification at [igi.org](https://igi.org)

## PROPORTIONS



Sample Image Used

## CLARITY CHARACTERISTICS



### KEY TO SYMBOLS

Red symbols indicate internal characteristics.  
Green symbols indicate external characteristics.

## COLOR

D E F G H I J Faint Very Light Light

## CLARITY

IF	VVS <sup>1-2</sup>	VS <sup>1-2</sup>	SI <sup>1-2</sup>	I <sup>1-3</sup>
Internally Flawless	Very Very Slightly Included	Very Slightly Included	Slightly Included	Included



© IGI 2020, International Gemological Institute

FD - 10 20

**www.igi.org**

## DIAMOND REPORT



May 23, 2024

IGI Report Number **LG635426250**Description **LABORATORY GROWN DIAMOND**Shape and Cutting Style **CUSHION BRILLIANT**

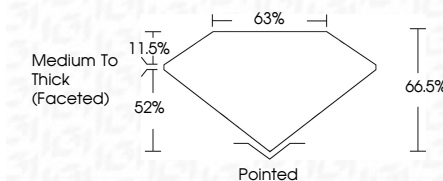
Measurements **7.14 X 5.59 X 3.72 MM**

## GRADING RESULTS

Carat Weight 1.13 CARAT

Color Grade F

Clarity Grade VS 1



### ADDITIONAL GRADING INFORMATION

Polish **EXCELLENT**Symmetry **EXCELLENT**Fluorescence **NONE**

Inscription(s) LABGROWN 15 LG635426250

Comments: This Laboratory Grown Diamond was created by Chemical Vapor Deposition (CVD) growth process.  
Type IIa



May 28, 2024	GI Search No LG43942920	1.13 CARAT	Vs 1	Ported	None	Laserdown (89)	Comments: The Laboratory Grown Diamond was confirmed to be a natural vapor Deposition (CVD) growth process. Type Iia
ICSI/SHON BRILLIANT	1.14 X 0.59 X 3.72 MM	64.6%	Excellent	Excellent	None	LG43942920	
	Color Grade	Clarity Grade	Table	Medium to thick (faceted)			
	Color Grade	Clarity Grade	Grain				
	Polish	Symmetry	Fluorescence				