



ELECTRONIC COPY

LABORATORY GROWN DIAMOND REPORT

May 23, 2024
IGI Report Number LG635425893
Description LABORATORY GROWN DIAMOND
Shape and Cutting Style CUT CORNERED RECTANGULAR MODIFIED BRILLIANT
Measurements 7.38 X 5.10 X 3.37 MM

GRADING RESULTS

Carat Weight 1.05 CARAT
Color Grade F
Clarity Grade VVS 2

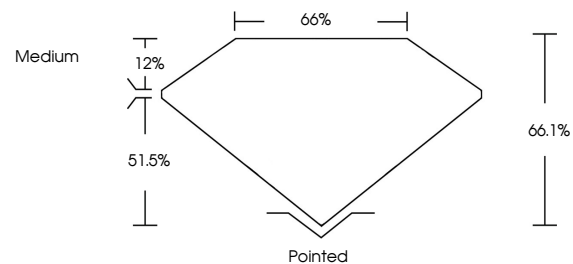
ADDITIONAL GRADING INFORMATION

Polish EXCELLENT
Symmetry EXCELLENT
Fluorescence NONE

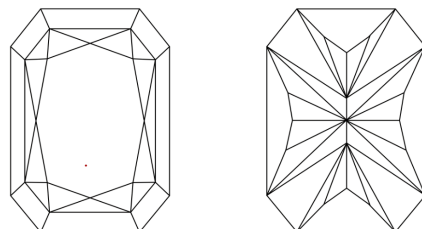
Inscription(s) IGI LG635425893

Comments: This Laboratory Grown Diamond was created by Chemical Vapor Deposition (CVD) growth process. Type IIa

PROPORTIONS

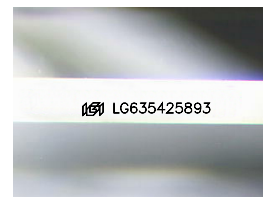


CLARITY CHARACTERISTICS



KEY TO SYMBOLS

Red symbols indicate internal characteristics. Green symbols indicate external characteristics.



Sample Image Used

COLOR

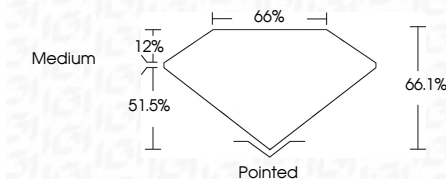
D E F G H I J Faint Very Light Light

CLARITY

IF VVS 1-2 VS 1-2 SI 1-2 I 1-3
Internally Flawless Very Very Slightly Included Very Slightly Included Slightly Included Included



May 23, 2024
IGI Report Number LG635425893
Description LABORATORY GROWN DIAMOND
Shape and Cutting Style CUT CORNERED RECTANGULAR MODIFIED BRILLIANT
Measurements 7.38 X 5.10 X 3.37 MM
GRADING RESULTS
Carat Weight 1.05 CARAT
Color Grade F
Clarity Grade VVS 2



ADDITIONAL GRADING INFORMATION

Polish EXCELLENT
Symmetry EXCELLENT
Fluorescence NONE
Inscription(s) IGI LG635425893

Comments: This Laboratory Grown Diamond was created by Chemical Vapor Deposition (CVD) growth process. Type IIa



IGI



May 23, 2024
IGI Report No. LG635425893
CUT CORNERED RECT. MODIFIED BRILLIANT
7.38 X 5.10 X 3.37 MM
1.05 CARAT
F
VVS 2
66.1%
51.5%
Medium
Pointed
EXCELLENT
EXCELLENT
NONE
IGI LG635425893

Comments: This Laboratory Grown Diamond was created by Chemical Vapor Deposition (CVD) growth process. Type IIa