



ELECTRONIC COPY

LABORATORY GROWN DIAMOND REPORT

May 27, 2024	
IGI Report Number	LG635410887
Description	LABORATORY GROWN DIAMOND
Shape and Cutting Style	EMERALD CUT
Measurements	8.28 X 5.53 X 3.69 MM

GRADING RESULTS

Carat Weight	1.69 CARAT
Color Grade	E
Clarity Grade	VS 1

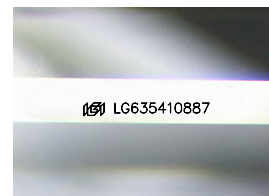
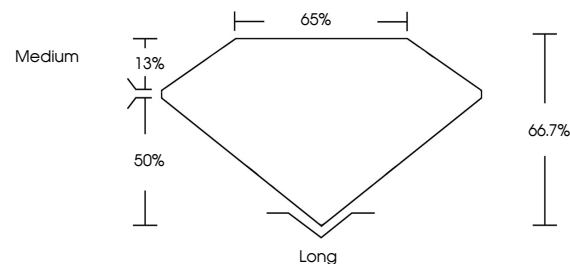
ADDITIONAL GRADING INFORMATION

Polish	EXCELLENT
Symmetry	EXCELLENT
Fluorescence	NONE
Inscription(s)	15 LG635410887

Comments: This Laboratory Grown Diamond was created by Chemical Vapor Deposition (CVD) growth process.
Type IIa

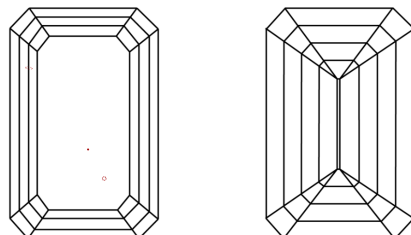
LG635410887
Report verification at lgi.org

PROPORTIONS



Sample Image Used

CLARITY CHARACTERISTICS



KEY TO SYMBOLS

Red symbols indicate internal characteristics.
Green symbols indicate external characteristics.

COLOR

D E F G H I J Faint Very Light Light

CLARITY

IF	VVS ¹⁻²	VS ¹⁻²	SI ¹⁻²	I ¹⁻³
Internally Flawless	Very Very Slightly Included	Very Slightly Included	Slightly Included	Included

© IGI 2020, International Gemological Institute

FD - 10 20

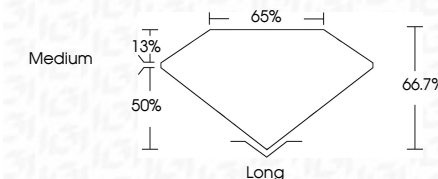
DIAMOND REPORT



May 27, 2024	
IGI Report Number	LG635410887
Description	LABORATORY GROWN DIAMOND
Shape and Cutting Style	EMERALD CUT
Measurements	8.28 X 5.53 X 3.69 MM

GRADING RESULTS

Carat Weight	1.69 CARAT
Color Grade	E
Clarity Grade	VS 1



ADDITIONAL GRADING INFORMATION

Polish	EXCELLENT
Symmetry	EXCELLENT
Fluorescence	NONE
Inscription(s)	 LG635410887
Comments: This Laboratory Grown Diamond was created by Chemical Vapor Deposition (CVD) growth process.	
Type IIa	



May 27, 2024
GI Report No LG635410887

3.28 X 5.63 X 3.69 MM	1.69 CARAT
Carat Weight	VS 1
Color Grade	66.7%
Clarity Grade	65%
Depth	Medium
Table	Long
Girdle	EXCELLENT
Culet	EXCELLENT
Polish	NONE
Symmetry	
Fluorescence	

Comments:
This Laboratory Grown Diamond was
created by Chemical Vapor Deposition
(CVD) growth process.

www.igi.org

THIS DOCUMENT WAS PRODUCED WITH THE FOLLOWING SECURITY MEASURES: SPECIAL DOCUMENT PAPER, INK SCREENS, WATERMARK BACKGROUND DESIGNS, HOLOGRAM AND OTHER SECURITY FEATURES NOT LISTED AND DO EXCEED DOCUMENT SECURITY INDUSTRY GUIDELINE