

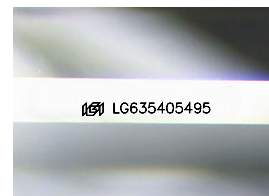
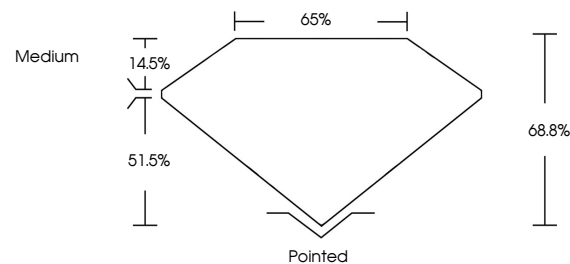


ELECTRONIC COPY

LABORATORY GROWN DIAMOND REPORT

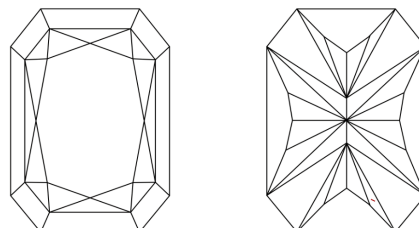
LG635405495
Report verification at lgi.org

PROPORTIONS



Sample Image Used

CLARITY CHARACTERISTICS



KEY TO SYMBOLS

Red symbols indicate internal characteristics.
Green symbols indicate external characteristics.

COLOR

D E F G H I J Faint Very Light Light

CLARITY

IF	VVS ^{1,2}	VS ^{1,2}	SI ^{1,2}	I ^{1,3}
Internally Flawless	Very Very Slightly Included	Very Slightly Included	Slightly Included	Included



© IGI 2020, International Gemological Institute

FD - 10 20

www.igi.org

DIAMOND REPORT



May 21, 2024

IGI Report Number LG635405495

Description **LABORATORY GROWN DIAMOND**

Shape and Cutting Style

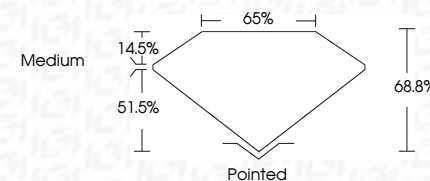
Measurements **7.12 X 5.06 X 3.48 MM**

GRADING RESULTS

Carat Weight 1.08 CARAT

Color Grade E

Clarity Grade VS 1



ADDITIONAL GRADING INFORMATION

Polish **EXCELLENT**Symmetry **EXCELLENT**Fluorescence **NONE**Inscription(s) LG635405495

Comments: This Laboratory Grown Diamond was created by Chemical Vapor Deposition (CVD) growth process.
Type IIa



May 21, 2024	1.08 CARAT
GJ REPORTED RECT. MODIFIED BRILLIANT	E
VS 1	68.6%
65%	Medium
Polished	None
EXCELLENT	EXCELLENT
EXCELLENT	EXCELLENT
Fluorescence	None
inscriptions(s)	1691 G53504595
Comments:	
The Laboratory Grown Diamond was	
grown by the Vapor Deposition	
(VD) growth process.	
Type Iia	