

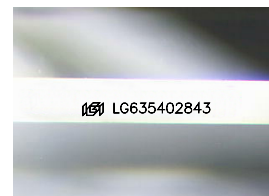
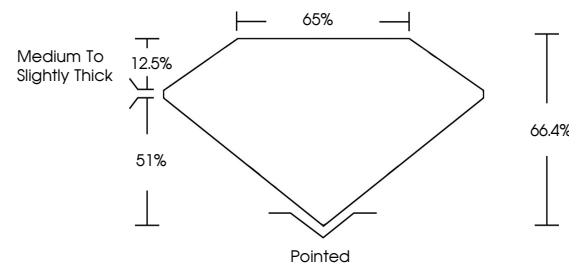


**ELECTRONIC COPY**

## LABORATORY GROWN DIAMOND REPORT

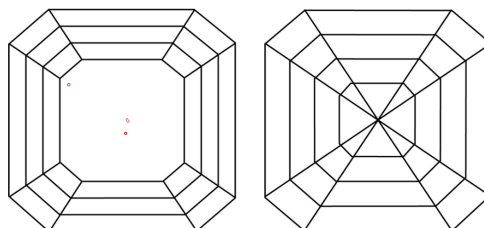
LG635402843  
Report verification at [igi.org](https://igi.org)

## PROPORTIONS



Sample Image Used

## CLARITY CHARACTERISTICS



### KEY TO SYMBOLS

Red symbols indicate internal characteristics.  
Green symbols indicate external characteristics.

## COLOR

D E F G H I J Faint Very Light Light

## CLARITY

IF	VVS <sup>1-2</sup>	VS <sup>1-2</sup>	SI <sup>1-2</sup>	I <sup>1-3</sup>
Internally Flawless	Very Very Slightly Included	Very Slightly Included	Slightly Included	Included



© IGI 2020, International Gemological Institute

FD - 10 20

**www.igi.org**

## DIAMOND REPORT



May 24, 2024

IGI Report Number **LG635402843**Description **LABORATORY GROWN DIAMOND**Shape and Cutting Style **SQUARE EMERALD CUT**

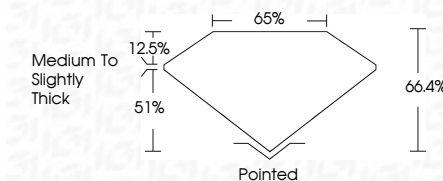
Measurements **5.64 X 5.59 X 3.71 MM**

## GRADING RESULTS

Carat Weight 1.06 CARAT

Color Grade D

Clarity Grade VS 1



### ADDITIONAL GRADING INFORMATION

Polish **EXCELLENT**Symmetry **EXCELLENT**Fluorescence **NONE**Inscription(s)  LG635402843

Comments: This Laboratory Grown Diamond was created by Chemical Vapor Deposition (CVD) growth process and may include post-growth treatment.  
Type IIa



May 24, 2024	Q1 Report No. LG535402843			
SQUARE EMBALD CUT	1.05 CARAT			
6.61 X 6.61 X 5.59 X 3.71 MM	D			
	Color Grade	Vs 1	Polished	
	Clarity Grade	66.0%	EXCELLENT	
	Depth	66.0%	EXCELLENT	
	Table	65%	NONE	
	Girdle	Medium to Slightly Thick	NONE	
	Fluorescence		IGSI LG535402843	
	Inscriptions(s)			
	Quiet			
	Polish			
	Symmetry			
	Fluorescence			
	Comments:			
	The Laboratory Grown Diamond was created by Chemical Vapor Deposition (CVD) growth process and may include post-growth treatment.			
	Type IId			