



ELECTRONIC COPY

LABORATORY GROWN DIAMOND REPORT

May 23, 2024	
IGI Report Number	LG634499904
Description	LABORATORY GROWN DIAMOND
Shape and Cutting Style	OLD EUROPEAN CUT
Measurements	7.94 X 7.97 X 4.99 MM

GRADING RESULTS

Carat Weight	2.02 CARATS
Color Grade	D
Clarity Grade	VVS 2

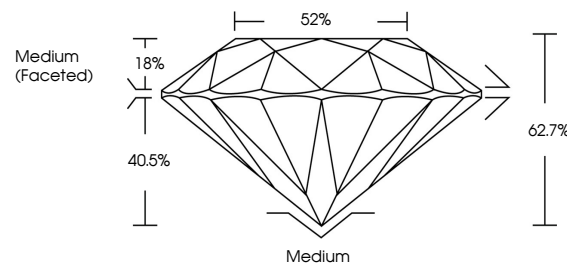
ADDITIONAL GRADING INFORMATION

Polish	EXCELLENT
Symmetry	EXCELLENT
Fluorescence	NONE
Inscription(s)	15 LG634499904

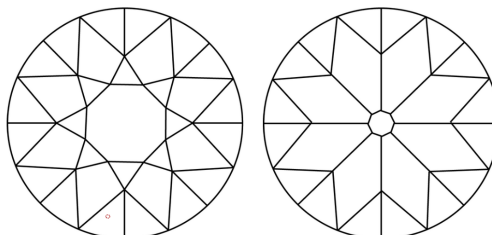
Comments: This Laboratory Grown Diamond was created by Chemical Vapor Deposition (CVD) growth process and may include post-growth treatment.
Type IIa

LG634499904
Report verification at [igi.org](https://www.igi.org)

PROPORTIONS

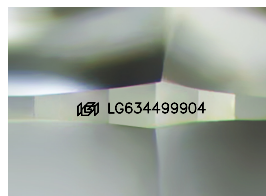


CLARITY CHARACTERISTICS



KEY TO SYMBOLS

Red symbols indicate internal characteristics.
Green symbols indicate external characteristics.



Sample Image Used

COLOR

D E F G H I J Faint Very Light Light

CLARITY

IF	VVS ¹⁻²	VS ¹⁻²	SI ¹⁻²	I ¹⁻³
Internally Flawless	Very Very Slightly Included	Very Slightly Included	Slightly Included	Included



© IGI 2020, International Gemological Institute

FD - 10 20

www.igi.org

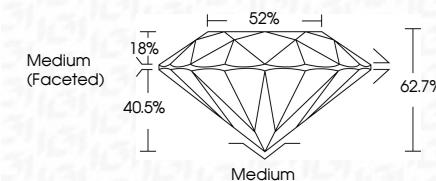
DIAMOND REPORT



May 23, 2024	
IGI Report Number	LG634499904
Description	LABORATORY GROWN DIAMOND
Shape and Cutting Style	OLD EUROPEAN CUT
Measurements	7.94 X 7.97 X 4.99 MM

GRADING RESULTS

Carat Weight	2.02 CARATS
Color Grade	D
Clarity Grade	VVS 2



ADDITIONAL GRADING INFORMATION

Polish	EXCELLENT
Symmetry	EXCELLENT
Fluorescence	NONE
Inscription(s)	 LG634499904

Comments: This Laboratory Grown Diamond was created by Chemical Vapor Deposition (CVD) growth process and may include post-growth treatment.
Type IIa



IG

May 23, 2024	2.02 CARATS	Medium	EXCELLENT	None	sent 6/5/2024
GL Report No LG63449904	VVS 2	62.7%	62%	EXCELLENT	
21D EUROPEAN CUT	Color Grade	Clarity Grade	Depth	Polish	
0.94 X 0.97 X 4.99 MM	Color Weight	Grade	Grade	Symmetry	
				Fluorescence	

Comments:
This Laboratory Grown Diamond was created by Chemical Vapor Deposition (CVD) growth process and may include post-growth treatment.