

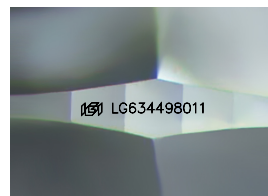
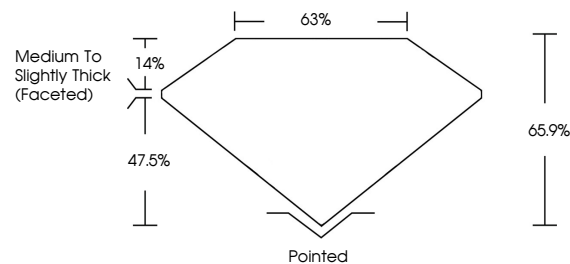


**ELECTRONIC COPY**

## LABORATORY GROWN DIAMOND REPORT

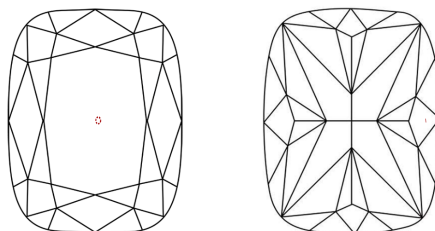
LG634498011  
Report verification at [igi.org](http://igi.org)

## PROPORTIONS



Sample Image Used

## CLARITY CHARACTERISTICS



### KEY TO SYMBOLS

Red symbols indicate internal characteristics.  
Green symbols indicate external characteristics.

## COLOR

D E F G H I J Faint Very Light Light

## CLARITY

IF	VVS <sup>1,2</sup>	VS <sup>1,2</sup>	SI <sup>1,2</sup>	I <sup>1,3</sup>
Internally Flawless	Very Very Slightly Included	Very Slightly Included	Slightly Included	Included



© IGI 2020, International Gemological Institute

FD - 10 20

## DIAMOND REPORT



May 11, 2024

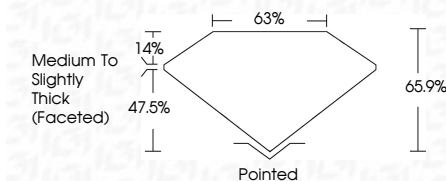
IGI Report Number **LG634498011**Description **LABORATORY GROWN DIAMOND**Shape and Cutting Style **CUSHION BRILLIANT**

Measurements **6.96 X 5.42 X 3.57 MM**

## GRADING RESULTS

Carat Weight 1.06 CARAT

Color Grade

Clarity Grade VVS 1

### ADDITIONAL GRADING INFORMATION

Polish **EXCELLENT**Symmetry **EXCELLENT**Fluorescence **NONE**Inscription(s)  LG634498011

Comments: As Grown - No indication of post-growth treatment.

This Laboratory Grown Diamond was created by High Pressure High Temperature (HPHT) growth process.

Type II



May 11, 2024	1.06 CARAT
GJ Report: No Indication of post growth	
GJ Gemstone ID: G634498011	
CUSHION BRILLIANT	
5.95 X 5.42 X 3.57 MM	
Color: White	
Color Grade	
Clarity Grade	
Depth	
Table	
Weight	
Medium to slightly thick (faceted)	
Polished	
EXCELLENT	
EXCELLENT	
NONE	
G634498011	
Comments:	
Is Grown: No Indication of post growth	
Is Labreated: No	
This Laboratory Growth Diamond was created by High Pressure High temperature (HPHT) growth process.	
Type II	