



ELECTRONIC COPY

LG634495739 Report verification at igi.org

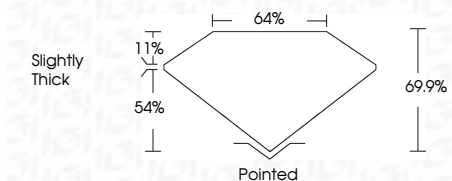


May 10, 2024 IGI Report Number LG634495739 Description LABORATORY GROWN DIAMOND Shape and Cutting Style CUT CORNERED RECTANGULAR MODIFIED BRILLIANT

Measurements 8.10 X 5.74 X 4.01 MM

GRADING RESULTS

Carat Weight 1.52 CARAT Color Grade E Clarity Grade VS 2



ADDITIONAL GRADING INFORMATION

Polish EXCELLENT Symmetry EXCELLENT Fluorescence NONE

Inscription(s) IGI LG634495739

Comments: This Laboratory Grown Diamond was created by Chemical Vapor Deposition (CVD) growth process and may include post-growth treatment. Type IIa



IGI

May 10, 2024 IGI Report No LG634495739 CUT CORNERED RECT. MODIFIED BRILLIANT 8.10 X 5.74 X 4.01 MM 1.52 CARAT E VS 2 69.9% 64% Slightly Thick Pointed EXCELLENT EXCELLENT NONE NONE IGI LG634495739

Comments: This Laboratory Grown Diamond was created by Chemical Vapor Deposition (CVD) growth process and may include post-growth treatment. Type IIa

LABORATORY GROWN DIAMOND REPORT

May 10, 2024 IGI Report Number LG634495739 Description LABORATORY GROWN DIAMOND Shape and Cutting Style CUT CORNERED RECTANGULAR MODIFIED BRILLIANT Measurements 8.10 X 5.74 X 4.01 MM

GRADING RESULTS

Carat Weight 1.52 CARAT Color Grade E Clarity Grade VS 2

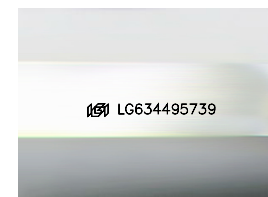
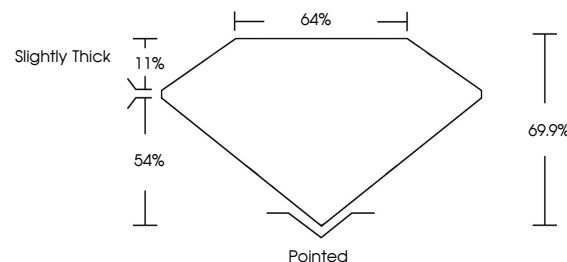
ADDITIONAL GRADING INFORMATION

Polish EXCELLENT Symmetry EXCELLENT Fluorescence NONE

Inscription(s) IGI LG634495739

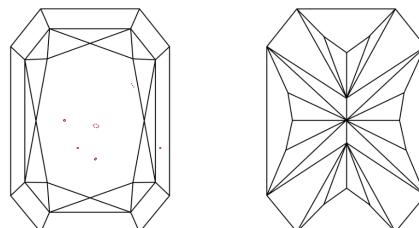
Comments: This Laboratory Grown Diamond was created by Chemical Vapor Deposition (CVD) growth process and may include post-growth treatment. Type IIa

PROPORTIONS



Sample Image Used

CLARITY CHARACTERISTICS



KEY TO SYMBOLS

Red symbols indicate internal characteristics. Green symbols indicate external characteristics.

COLOR

D E F G H I J Faint Very Light Light

CLARITY

IF VS 1-2 VS 1-2 SI 1-2 I 1-3 Internally Flawless Very Very Slightly Included Very Slightly Included Slightly Included Included

