



ELECTRONIC COPY

LG634494161
Report verification at igi.org



May 18, 2024
IGI Report Number LG634494161
Description LABORATORY GROWN DIAMOND
Shape and Cutting Style SQUARE CUSHION MODIFIED BRILLIANT
Measurements 5.53 X 5.39 X 3.76 MM
GRADING RESULTS
Carat Weight 1.09 CARAT
Color Grade FANCY VIVID YELLOW
Clarity Grade VVS 2

LABORATORY GROWN DIAMOND REPORT

May 18, 2024
IGI Report Number LG634494161
Description LABORATORY GROWN DIAMOND
Shape and Cutting Style SQUARE CUSHION MODIFIED BRILLIANT
Measurements 5.53 X 5.39 X 3.76 MM

GRADING RESULTS

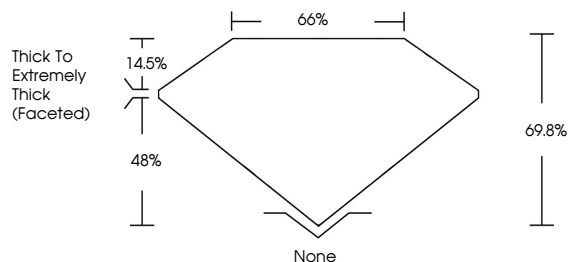
Carat Weight 1.09 CARAT
Color Grade FANCY VIVID YELLOW
Clarity Grade VVS 2

ADDITIONAL GRADING INFORMATION

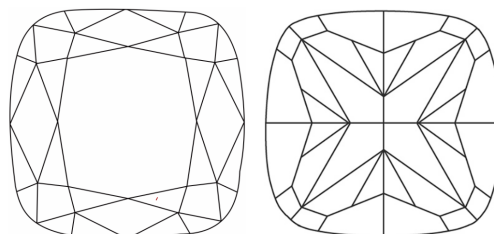
Polish VERY GOOD
Symmetry EXCELLENT
Fluorescence NONE
Inscription(s) IGI LG634494161

Comments: As Grown - No indication of post-growth treatment.
This Laboratory Grown Diamond was created by High Pressure High Temperature (HPHT) growth process.

PROPORTIONS

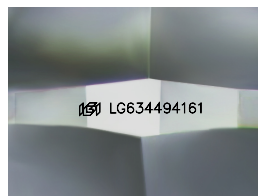


CLARITY CHARACTERISTICS



KEY TO SYMBOLS

Red symbols indicate internal characteristics.
Green symbols indicate external characteristics.



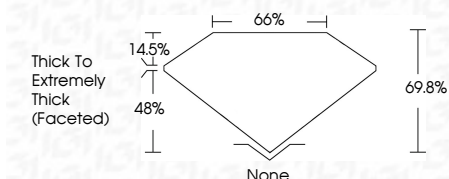
Sample Image Used

COLOR

D E F G H I J Faint Very Light Light

CLARITY

Table with columns for clarity grades: IF, VVS 1-2, VS 1-2, SI 1-2, I 1-3 and their corresponding descriptions: Internally Flawless, Very Very Slightly Included, Very Slightly Included, Slightly Included, Included.



ADDITIONAL GRADING INFORMATION

Polish VERY GOOD
Symmetry EXCELLENT
Fluorescence NONE
Inscription(s) IGI LG634494161
Comments: As Grown - No indication of post-growth treatment.
This Laboratory Grown Diamond was created by High Pressure High Temperature (HPHT) growth process.



IGI



May 18, 2024
IGI Report No LG634494161
SQUARE CUSHION MODIFIED BRILLIANT
1.09 CARAT
FANCY VIVID YELLOW
VVS 2
5.53 X 5.39 X 3.76 MM
69.8%
None
Thick To Extremely Thick (Faceted)
None
VERY GOOD
EXCELLENT
NONE
None
IGI LG634494161

Comments: As Grown - No indication of post-growth treatment.
This Laboratory Grown Diamond was created by High Pressure High Temperature (HPHT) growth process.