



ELECTRONIC COPY

LG634489125
Report verification at igi.org

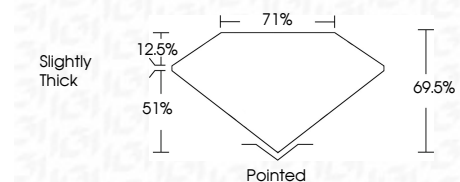


May 22, 2024
IGI Report Number **LG634489125**
Description **LABORATORY GROWN DIAMOND**
Shape and Cutting Style **CUT CORNERED
RECTANGULAR MODIFIED
BRILLIANT**

Measurements **10.35 X 7.25 X 5.04 MM**

GRADING RESULTS

Carat Weight **3.69 CARATS**
Color Grade **FANCY VIVID BLUE**
Clarity Grade **VVS 2**



ADDITIONAL GRADING INFORMATION

Polish **EXCELLENT**
Symmetry **EXCELLENT**
Fluorescence **NONE**
Inscription(s) **IGI LG634489125**

Comments: This Laboratory Grown Diamond was created by Chemical Vapor Deposition (CVD) growth process. Indications of post-growth treatment.



IGI

May 22, 2024
IGI Report No LG634489125
CUT CORNERED RECT. MODIFIED BRILLIANT
10.35 X 7.25 X 5.04 MM
3.69 CARATS
FANCY VIVID BLUE
VVS 2
69.5%
71%
Slightly Thick
Pointed
EXCELLENT
EXCELLENT
NONE
IGI LG634489125

Comments: This Laboratory Grown Diamond was created by Chemical Vapor Deposition (CVD) growth process. Indications of post-growth treatment.

LABORATORY GROWN DIAMOND REPORT

May 22, 2024
IGI Report Number **LG634489125**
Description **LABORATORY GROWN DIAMOND**
Shape and Cutting Style **CUT CORNERED RECTANGULAR
MODIFIED BRILLIANT**
Measurements **10.35 X 7.25 X 5.04 MM**

GRADING RESULTS

Carat Weight **3.69 CARATS**
Color Grade **FANCY VIVID BLUE**
Clarity Grade **VVS 2**

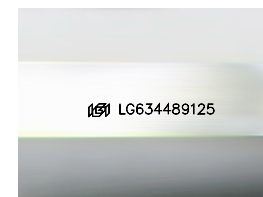
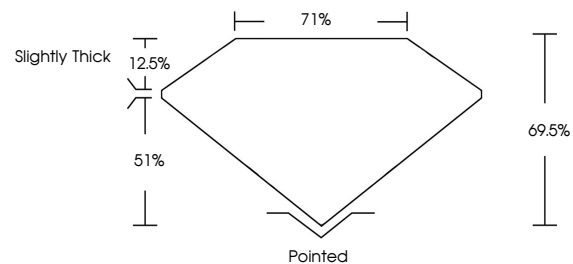
ADDITIONAL GRADING INFORMATION

Polish **EXCELLENT**
Symmetry **EXCELLENT**
Fluorescence **NONE**

Inscription(s) **IGI LG634489125**

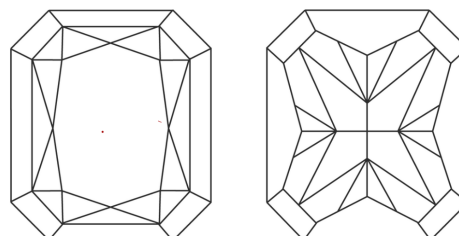
Comments: This Laboratory Grown Diamond was created by Chemical Vapor Deposition (CVD) growth process. Indications of post-growth treatment.

PROPORTIONS



Sample Image Used

CLARITY CHARACTERISTICS



KEY TO SYMBOLS

Red symbols indicate internal characteristics.
Green symbols indicate external characteristics.

COLOR

D E F G H I J Faint Very Light Light

CLARITY

IF	VS ¹⁻²	VS ¹⁻²	SI ¹⁻²	I ¹⁻³
Internally Flawless	Very Very Slightly Included	Very Slightly Included	Slightly Included	Included

