



ELECTRONIC COPY

LG634478670
Report verification at igi.org

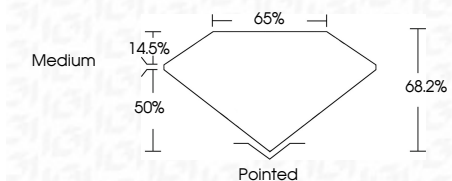


May 14, 2024
IGI Report Number LG634478670
Description LABORATORY GROWN DIAMOND
Shape and Cutting Style CUT CORNERED RECTANGULAR MODIFIED BRILLIANT

Measurements 8.83 X 6.25 X 4.26 MM

GRADING RESULTS

Carat Weight 2.05 CARATS
Color Grade E
Clarity Grade VVS 2



ADDITIONAL GRADING INFORMATION

Polish EXCELLENT
Symmetry EXCELLENT
Fluorescence NONE
Inscription(s) LG634478670

Comments: This Laboratory Grown Diamond was created by Chemical Vapor Deposition (CVD) growth process and may include post-growth treatment. Type IIa



May 14, 2024
IGI Report No LG634478670
CUT CORNERED RECT. MODIFIED BRILLIANT
8.83 X 6.25 X 4.26 MM
2.05 CARATS
E
VVS 2
68.2%
50%
Medium
Pointed
EXCELLENT
EXCELLENT
NONE
LG634478670

Comments: This Laboratory Grown Diamond was created by Chemical Vapor Deposition (CVD) growth process and may include post-growth treatment. Type IIa

LABORATORY GROWN DIAMOND REPORT

May 14, 2024
IGI Report Number LG634478670
Description LABORATORY GROWN DIAMOND
Shape and Cutting Style CUT CORNERED RECTANGULAR MODIFIED BRILLIANT
Measurements 8.83 X 6.25 X 4.26 MM

GRADING RESULTS

Carat Weight 2.05 CARATS
Color Grade E
Clarity Grade VVS 2

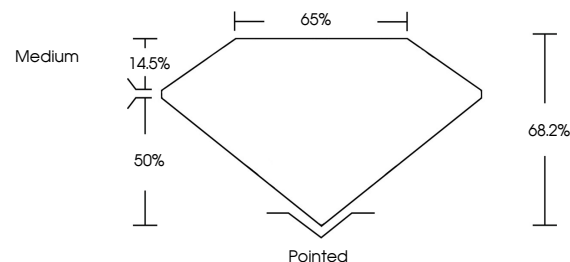
ADDITIONAL GRADING INFORMATION

Polish EXCELLENT
Symmetry EXCELLENT
Fluorescence NONE

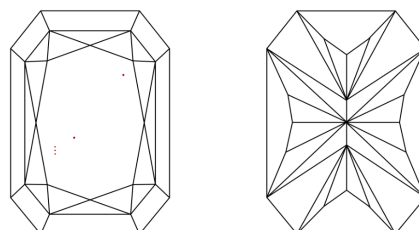
Inscription(s) LG634478670

Comments: This Laboratory Grown Diamond was created by Chemical Vapor Deposition (CVD) growth process and may include post-growth treatment. Type IIa

PROPORTIONS



CLARITY CHARACTERISTICS



KEY TO SYMBOLS

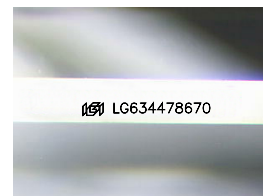
Red symbols indicate internal characteristics.
Green symbols indicate external characteristics.

COLOR

D E F G H I J Faint Very Light Light

CLARITY

IF VVS 1-2 VS 1-2 SI 1-2 I 1-3
Internally Flawless Very Very Slightly Included Very Slightly Included Slightly Included Included



Sample Image Used

