



ELECTRONIC COPY

LABORATORY GROWN DIAMOND REPORT

May 16, 2024	
IGI Report Number	LG634478453
Description	LABORATORY GROWN DIAMOND
Shape and Cutting Style	CUT CORNERED RECTANGULAR MODIFIED BRILLIANT
Measurements	7.40 X 4.98 X 3.37 MM

GRADING RESULTS

Carat Weight	1.06 CARAT
Color Grade	E
Clarity Grade	VS 1

ADDITIONAL GRADING INFORMATION

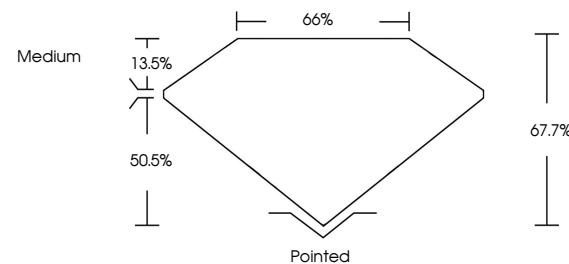
Polish	EXCELLENT
Symmetry	EXCELLENT
Fluorescence	NONE

Inscription(s)  LG634478453

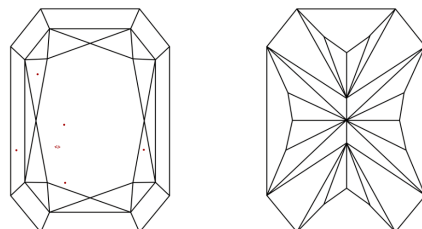
Comments: This Laboratory Grown Diamond was created by Chemical Vapor Deposition (CVD) growth process and may include post-growth treatment.
Type IIa

LG634478453
Report verification at lgi.org

PROPORTIONS

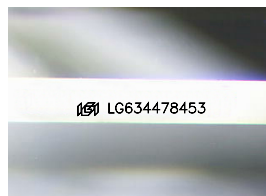


CLARITY CHARACTERISTICS



KEY TO SYMBOLS

Red symbols indicate internal characteristics.
Green symbols indicate external characteristics.



Sample Image Used

COLOR

D E F G H I J Faint Very Light Light

CLARITY

IF	VVS ^{1,2}	VS ^{1,2}	SI ^{1,2}	I ^{1,3}
Internally Flawless	Very Very Slightly Included	Very Slightly Included	Slightly Included	Included



© IGI 2020, International Gemological Institute

FD - 10 20

www.igi.org

DIAMOND REPORT



May 16, 2024

IGI Report Number LG634478453

Description **LABORATORY GROWN DIAMOND**

Shape and Cutting Style

CUT CORNERED
RECTANGULAR MODIFIED
BRILLIANT

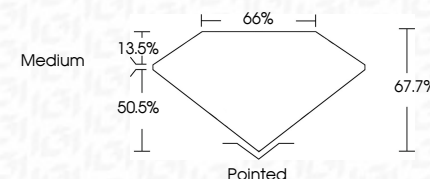
Measurements 7.40 X 4.98 X 3.37 MM

GRADING RESULTS

Carat Weight 1.06 CARAT

Color Grade E

Clarity Grade VS 1



ADDITIONAL GRADING INFORMATION

Polish **EXCELLENT**

Symmetry **EXCELLENT**

Fluorescence **NONE**Inscription(s) 113 LG634478453

Comments: This Laboratory Grown Diamond was created by Chemical Vapor Deposition (CVD) growth process and may include post-growth treatment.
Type IIa



May 16, 2024	
GI CORNBED RECT. MODIFIED BRILLIANT	
GI REPORT NO. LG53479463	
CUT CORNBED RECT. MODIFIED BRILLIANT	
4.07 X 4.98 X 3.37 MM	
Carat Weight	1.06 CARAT
Color Grade	E
Clarity Grade	VS 1
Depth	61.7%
Table	66%
Girdle	Medium
Culet	Pointed
Polish	EXCELLENT
Symmetry	EXCELLENT
Fluorescence	NONE
Inscriptions(s)	689 LG53479463

Comments:

The Laboratory Crown Diamond was grown using a High Pressure High Temperature (HPHT) growth process and may include post-growth treatment.

Type IIA