



ELECTRONIC COPY

LABORATORY GROWN DIAMOND REPORT

May 8, 2024	
IGI Report Number	LG634468420
Description	LABORATORY GROWN DIAMOND
Shape and Cutting Style	ROUND BRILLIANT
Measurements	9.58 - 9.62 X 5.80 MM

GRADING RESULTS

Carat Weight	3.30 CARATS
Color Grade	G
Clarity Grade	VVS 2
Cut Grade	IDEAL

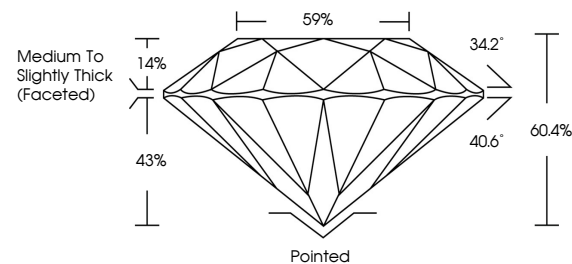
ADDITIONAL GRADING INFORMATION

Polish	EXCELLENT
Symmetry	EXCELLENT
Fluorescence	NONE
Inscription(s)	 LG634468420

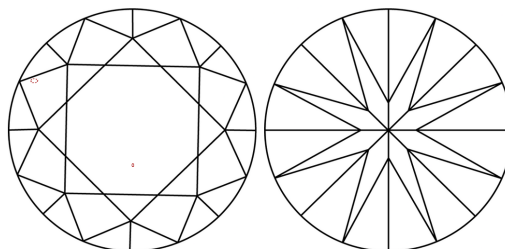
Comments: This Laboratory Grown Diamond was created by Chemical Vapor Deposition (CVD) growth process and may include post-growth treatment.
Type IIa

LG634468420
Report verification at igi.org

PROPORTIONS

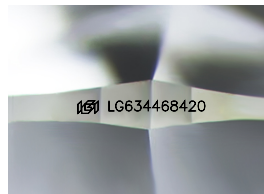


CLARITY CHARACTERISTICS



KEY TO SYMBOLS

Red symbols indicate internal characteristics.
Green symbols indicate external characteristics.



Sample Image Used

COLOR

D E F G H I J Faint Very Light Light

CLARITY

IF	VVS ¹⁻²	VS ¹⁻²	SI ¹⁻²	I ¹⁻³
Internally Flawless	Very Very Slightly Included	Very Slightly Included	Slightly Included	Included



© IGI 2020, International Gemological Institute

FD - 10 20

www.igi.org

DIAMOND REPORT



May 8, 2024

IGI Report Number **LG634468420**

Description	LABORATORY GROWN DIAMOND
-------------	--------------------------

Shape and Cutting Style **ROUND BRILLIANT**

Measurements	9.58 - 9.62 X 5.80 MM
--------------	-----------------------

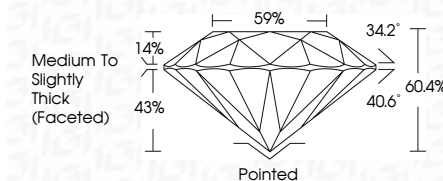
GRADING RESULTS

Carat Weight **3.30 CARATS**

Color Grade G

Clarity Grade WS 2

Cut Grade **IDEAL**



ADDITIONAL GRADING INFORMATION

Polish **EXCELLENT**Symmetry **EXCELLENT**Fluorescence **NONE**Inscription(s)  LG634468420

Comments: This Laboratory Grown Diamond was created by Chemical Vapor Deposition (CVD) growth process and may include post-growth treatment.
Type IIa



May 8, 2024	Report No. LG34469420	3.30 CARATS	VVS 2	Painted
ROUND BRILLIANT		G	IDEAL	EXCELLENT
559 - 5.62 x 5.80 MM			60.4%	NONE
Color Grade			59%	1601 LG34469420
Carat Weight			Medium to Slightly Thick Facetted	
Clarity Grade				
Cut Grade				
Depth				
Table				
Girdle				
Culet				
Polish				
Symmetry				
Fluorescence				
Inscriptions(s)				
Comments:				
This Laboratory Grown Diamond was created by Chemical Vapor Deposition (CVD) growth process and may include post-growth treatment.				
Type IId				