



ELECTRONIC COPY

LG634468141
Report verification at igi.org



June 12, 2024
IGI Report Number LG634468141
Description LABORATORY GROWN DIAMOND
Shape and Cutting Style OLD EUROPEAN CUT
Measurements 7.74 X 7.88 X 5.41 MM

GRADING RESULTS

Carat Weight 2.15 CARATS
Color Grade F
Clarity Grade VS 1

LABORATORY GROWN DIAMOND REPORT

June 12, 2024
IGI Report Number LG634468141
Description LABORATORY GROWN DIAMOND
Shape and Cutting Style OLD EUROPEAN CUT
Measurements 7.74 X 7.88 X 5.41 MM

GRADING RESULTS

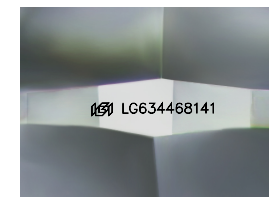
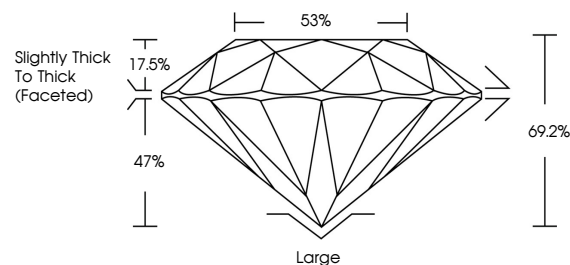
Carat Weight 2.15 CARATS
Color Grade F
Clarity Grade VS 1

ADDITIONAL GRADING INFORMATION

Polish EXCELLENT
Symmetry VERY GOOD
Fluorescence NONE
Inscription(s) IGI LG634468141

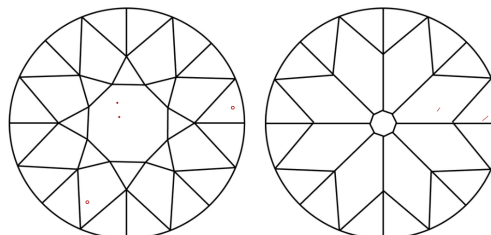
Comments: This Laboratory Grown Diamond was created by Chemical Vapor Deposition (CVD) growth process. Indications of post-growth treatment.

PROPORTIONS



Sample Image Used

CLARITY CHARACTERISTICS



KEY TO SYMBOLS

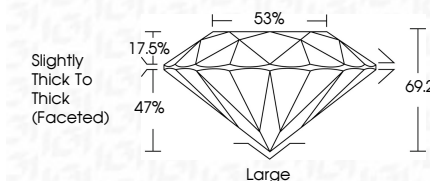
Red symbols indicate internal characteristics.
Green symbols indicate external characteristics.

COLOR

D E F G H I J Faint Very Light Light

CLARITY

IF WS 1-2 VS 1-2 SI 1-2 I 1-3
Internally Flawless Very Very Slightly Included Very Slightly Included Slightly Included Included



ADDITIONAL GRADING INFORMATION

Polish EXCELLENT
Symmetry VERY GOOD
Fluorescence NONE
Inscription(s) IGI LG634468141
Comments: This Laboratory Grown Diamond was created by Chemical Vapor Deposition (CVD) growth process. Indications of post-growth treatment.



IGI



June 12, 2024
IGI Report No LG634468141
OLD EUROPEAN CUT
7.74 X 7.88 X 5.41 MM
2.15 CARATS
F
VS 1
69.2%
53%
Slightly Thick To Thick (Faceted)
Large
EXCELLENT
VERY GOOD
NONE
IGI LG634468141
Comments: This Laboratory Grown Diamond was created by Chemical Vapor Deposition (CVD) growth process. Indications of post-growth treatment.