



ELECTRONIC COPY

LABORATORY GROWN DIAMOND REPORT

LG634443845
Report verification at igi.org

DIAMOND REPORT



May 15, 2024

IGI Report Number **LG634443845**

| | |
|-------------|--------------------------|
| Description | LABORATORY GROWN DIAMOND |
|-------------|--------------------------|

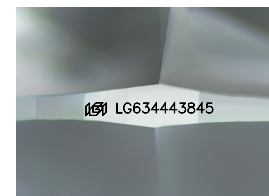
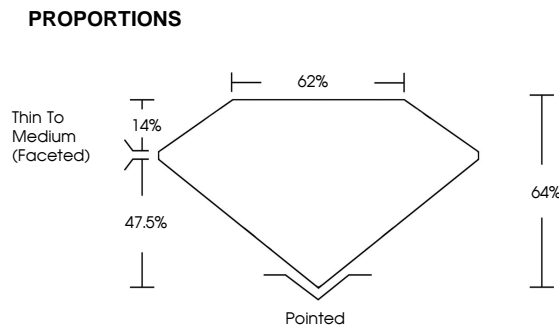
Shape and Cutting Style **CUSHION MODIFIED
BRILLIANT**

Measurements 7.16 X 6.25 X 4.00 MM

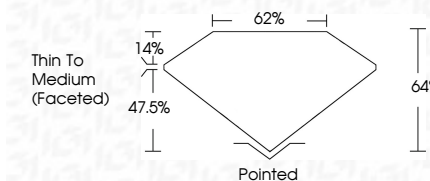
GRADING RESULTS

Carat Weight 1.40 CARAT

Color Grade D

Clarity Grade WS 1

Sample Image Used



GRADING RESULTS

Carat Weight 1.40 CARAT

Color Grade D

| | |
|---------------|-------|
| Clarity Grade | VVS 1 |
|---------------|-------|

ADDITIONAL GRADING INFORMATION

Polish **EXCELLENT**

Symmetry **EXCELLENT**

Fluorescence **NONE**Inscription(s)  LG634443845

Comments: This Laboratory Grown Diamond was created by Chemical Vapor Deposition (CVD) growth process and may include post-growth treatment. Type IIa

COLOR

D E F G H I J Faint Very Light Light

CLARITY

| IF | VVS ^{1,2} | VS ^{1,2} | SI ^{1,2} | I ^{1,3} |
|---------------------|-----------------------------|------------------------|-------------------|------------------|
| Internally Flawless | Very Very Slightly Included | Very Slightly Included | Slightly Included | Included |



© IGI 2020, International Gemological Institute

FD - 10 20



THIS DOCUMENT WAS PRODUCED WITH THE FOLLOWING SECURITY MEASURES: SPECIAL DOCUMENT PAPER, INK SCREENS, WATERMARK, BACKGROUND DESIGNS, HOLOGRAM AND OTHER SECURITY FEATURES NOT LISTED AND DO EXCEED DOCUMENT SECURITY INDUSTRY GUIDELINE



| | | | | | | | | | | | | | |
|----------------------------|------------|---------------------|-------------|---------------|-------|-------|--------|-----------------------------|---------|-----------|-----------|------|----------------|
| May 15, 2024 | 1.40 CARAT | Color Weight | Color Grade | Clarity Grade | Depth | Table | Girdle | Thin To Medium (Faceted) | Pointed | Excellent | Excellent | NONE | 16911559446846 |
| GI Report No. LG59446846 | | | | | | | | | | | | | |
| CUSHION MODIFIED BRILLIANT | | | | | | | | | | | | | |
| | 1.40 MM | 1.6 X 2.5 X 4.00 MM | | | | | | | | | | | |

Comments: The Laboratory Grown Diamond was grown using High Pressure High Temperature (HPHT) growth process and may include post-growth treatment.

Type IIA

Comments:
This Laboratory Grown Diamond was created by Chemical Vapor Deposition (CVD) growth process and may include post-growth treatment.