



ELECTRONIC COPY

LABORATORY GROWN DIAMOND REPORT

May 22, 2024	
IGI Report Number	LG634440617
Description	LABORATORY GROWN DIAMOND
Shape and Cutting Style	ROUND BRILLIANT
Measurements	7.43 - 7.47 X 4.65 MM

GRADING RESULTS

Carat Weight	1.61 CARAT
Color Grade	F
Clarity Grade	VS 2
Cut Grade	IDEAL

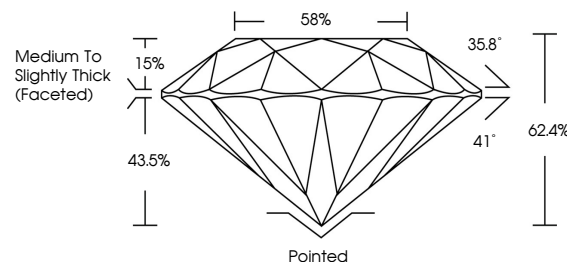
ADDITIONAL GRADING INFORMATION

Polish	EXCELLENT
Symmetry	EXCELLENT
Fluorescence	NONE
Inscription(s)	15 LG634440617

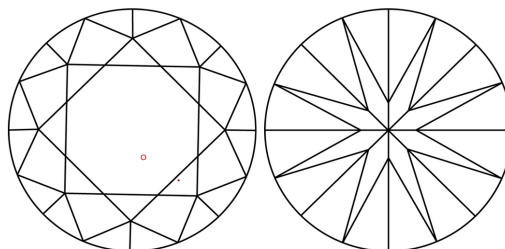
Comments: This Laboratory Grown Diamond was created by Chemical Vapor Deposition (CVD) growth process and may include post-growth treatment.
Type IIa

LG634440617
Report verification at lgi.org

PROPORTIONS

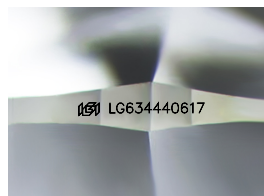


CLARITY CHARACTERISTICS



KEY TO SYMBOLS

Red symbols indicate internal characteristics.
Green symbols indicate external characteristics.



Sample Image Used

COLOR

D E F G H I J Faint Very Light Light

CLARITY

IF	VVS ¹⁻²	VS ¹⁻²	SI ¹⁻²	I ¹⁻³
Internally Flawless	Very Very Slightly Included	Very Slightly Included	Slightly Included	Included



© IGI 2020, International Gemological Institute

FD - 10 20

www.igi.org

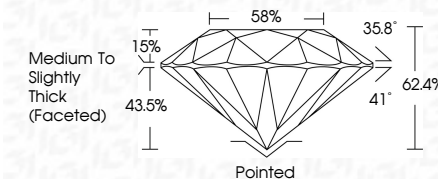
DIAMOND REPORT



May 22, 2024	
IGI Report Number	LG634440617
Description	LABORATORY GROWN DIAMOND
Shape and Cutting Style	ROUND BRILLIANT
Measurements	7.43 - 7.47 X 4.65 MM

GRADING RESULTS

Carat Weight	1.61 CARAT
Color Grade	F
Clarity Grade	VS 2
Cut Grade	IDEAL



ADDITIONAL GRADING INFORMATION

Polish	EXCELLENT
Symmetry	EXCELLENT
Fluorescence	NONE
Inscription(s)	15 LG 634440617

Comments: This Laboratory Grown Diamond was created by Chemical Vapor Deposition (CVD) growth process and may include post-growth treatment.
Type IIa



May 22, 2024
GI Report No LG634440617
ROUND BRILLIANT

7.48 - 7.47 X 4.65 MM	1.61 CARAT
Color	VS 2
Clarity Grade	IDEAL
Cut Grade	62.4%
Depth	59%
Table	Medium to slightly Thick (faceted)
Girdle	
Culet	Pointed
Polish	EXCELLENT
Symmetry	EXCELLENT
Fluorescence	NONE
Report #	444117

Comments:
This Laboratory Grown Diamond was created by Chemical Vapor Deposition (CVD) growth process and may include post-growth treatment.