

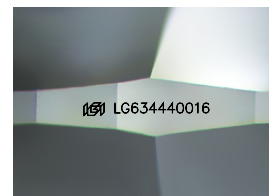
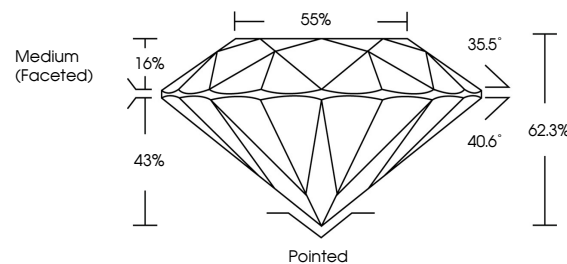


**ELECTRONIC COPY**

## LABORATORY GROWN DIAMOND REPORT

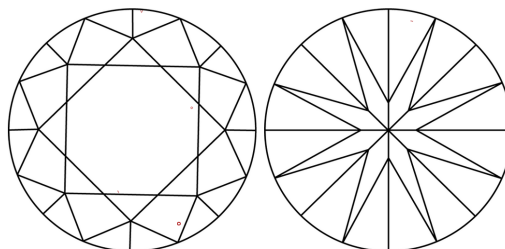
LG634440016  
Report verification at [igi.org](https://igi.org)

## PROPORTIONS



Sample Image Used

## CLARITY CHARACTERISTICS



### KEY TO SYMBOLS

Red symbols indicate internal characteristics.  
Green symbols indicate external characteristics.

**COLOR**

D E F G H I J Faint Very Light Light

## CLARITY

| IF                  | VVS <sup>1,2</sup>          | VS <sup>1,2</sup>      | SI <sup>1,2</sup> | I <sup>1,3</sup> |
|---------------------|-----------------------------|------------------------|-------------------|------------------|
| Internally Flawless | Very Very Slightly Included | Very Slightly Included | Slightly Included | Included         |



© IGI 2020, International Gemological Institute

FD - 10 20

**www.igi.org**

## DIAMOND REPORT



May 22, 2024

IGI Report Number **LG634440016**

Description **LABORATORY GROWN DIAMOND**Shape and Cutting Style **ROUND BRILLIANT**

Measurements 8.49 - 8.52 X 5.30 MM

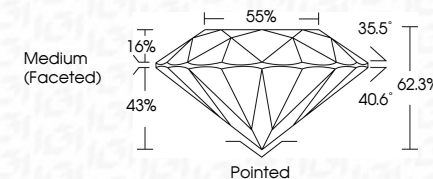
## GRADING RESULTS

Carat Weight **2.36 CARATS**

Color Grade **FANCY VIVID PINK**

Clarity Grade VS 1

Cut Grade **IDEAL**



### ADDITIONAL GRADING INFORMATION

Polish **EXCELLENT**Symmetry **EXCELLENT**

Fluorescence SLIGHT

Inscription(s)  LG634440016

Comments: This Laboratory Grown Diamond was created by Chemical Vapor Deposition (CVD) growth process.

Indications of post-growth treatment.



IG

|                 |                          |                  |                  |                 |  |
|-----------------|--------------------------|------------------|------------------|-----------------|--|
| May 22, 2024    | GI Report No. LG34440016 | 2.3% CARATS      | Vs 1             | Ported          | Comments:<br>This is a Crown Diamond used<br>as treated by Chemical Vapor Deposition<br>(CVD) growth process.<br>Indications of post-growth treatment. |
| ROUND BRILLIANT | 4.69 - 4.62 X 5.30 MM    | FANCY VIVID PINK | IDEAL            | EXCELLENT       |  |
|                 | Color Weight             |                  | 62.3%            | EXCELLENT       |  |
|                 | Carat Grade              |                  | 55%              | SLIGHT          |  |
|                 | Clarity Grade            |                  | Medium (Faceted) | lg LG34440016   |  |
|                 | Cut Grade                |                  |                  | Quiet           |  |
|                 | Depth                    |                  |                  | Polish          |  |
|                 | Table                    |                  |                  | Symmetry        |  |
|                 | Girdle                   |                  |                  | Fluorescence    |  |
|                 |                          |                  |                  | Inscriptions(s) |  |