

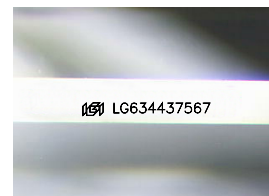
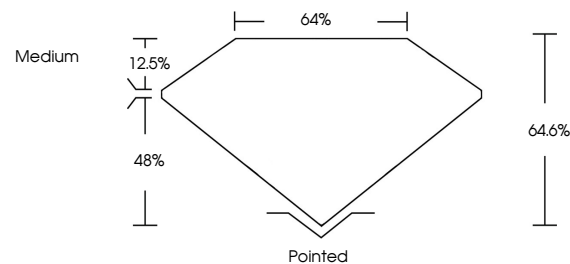


**ELECTRONIC COPY**

## LABORATORY GROWN DIAMOND REPORT

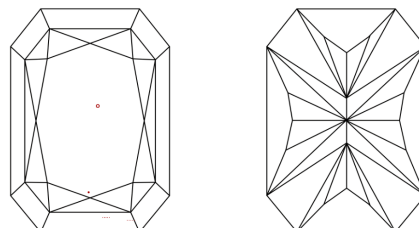
LG634437567  
Report verification at [lqi.org](https://lqi.org)

## PROPORTIONS



Sample Image Used

## CLARITY CHARACTERISTICS



### KEY TO SYMBOLS

Red symbols indicate internal characteristics.  
Green symbols indicate external characteristics.

## COLOR

D E F G H I J Faint Very Light Light

## CLARITY

IF	VVS <sup>1,2</sup>	VS <sup>1,2</sup>	SI <sup>1,2</sup>	I <sup>1,3</sup>
Internally Flawless	Very Very Slightly Included	Very Slightly Included	Slightly Included	Included



© IGI 2020, International Gemological Institute

FD - 10 20

**www.igi.org**

## DIAMOND REPORT



May 16, 2024

IGI Report Number **LG634437567**

Description	LABORATORY GROWN DIAMOND
-------------	--------------------------

Shape and Cutting Style

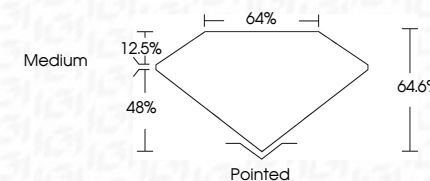
Measurements **7.12 X 5.08 X 3.28 MM**

## GRADING RESULTS

Carat Weight 1.01 CARAT

Color Grade D

Clarity Grade VS 1



### ADDITIONAL GRADING INFORMATION

Polish **EXCELLENT**Symmetry **EXCELLENT**Fluorescence **NONE**Inscription(s)  LG634437567

Comments: This Laboratory Grown Diamond was created by Chemical Vapor Deposition (CVD) growth process and may include post-growth treatment.  
Type IIa



May 16, 2024	
GI Report No. LG3437557	
GI COINTEGRATED BEC1, MODIFIED BRILLIANT	
1.01 CARAT	
D	
VS 1	
64.6%	
64%	
Medium	
Pointed	
EXCELLENT	
EXCELLENT	
NONE	
1001 LG3437557	

Comments:

The Laboratory Grown Diamond was grown using a chemical vapor deposition (CVD) growth process and may include post-growth treatment.

Type Ila