

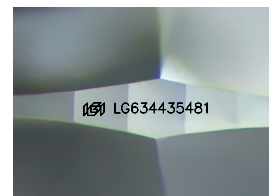
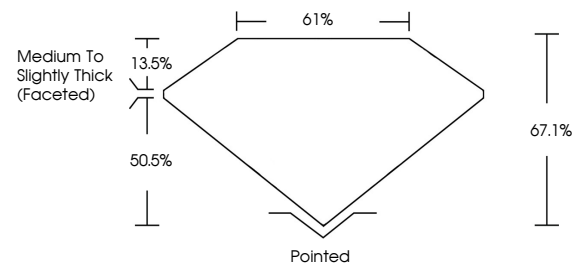


**ELECTRONIC COPY**

## LABORATORY GROWN DIAMOND REPORT

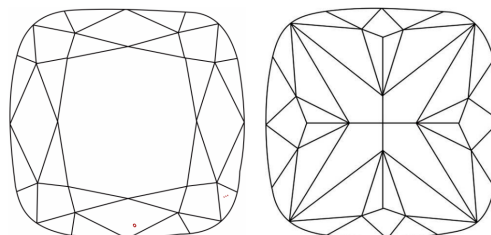
LG634435481  
Report verification at [igi.org](https://igi.org)

## PROPORTIONS



Sample Image Used

## CLARITY CHARACTERISTICS



### KEY TO SYMBOLS

Red symbols indicate internal characteristics.  
Green symbols indicate external characteristics.

## COLOR

D E F G H I J Faint Very Light Light

## CLARITY

IF	VVS <sup>1,2</sup>	VS <sup>1,2</sup>	SI <sup>1,2</sup>	I <sup>1,3</sup>
Internally Flawless	Very Very Slightly Included	Very Slightly Included	Slightly Included	Included



© IGI 2020, International Gemological Institute

FD - 10 20

**www.igi.org**

## DIAMOND REPORT



May 14, 2024

IGI Report Number **LG634435481**Description **LABORATORY GROWN DIAMOND**Shape and Cutting Style **SQUARE CUSHION BRILLIANT**

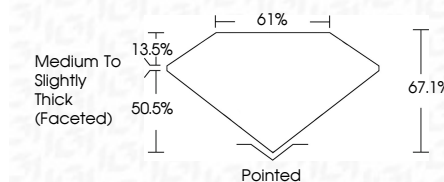
Measurements 7.59 X 7.24 X 4.86 MM

## GRADING RESULTS

Carat Weight **2.03 CARATS**

Color Grade

Clarity Grade VS 1



### ADDITIONAL GRADING INFORMATION

Polish EXCELLENT

Symmetry **EXCELLENT**Fluorescence **NONE**Inscription(s)  LG634435481

Comments: This Laboratory Grown Diamond was created by Chemical Vapor Deposition (CVD) growth process and may include post-growth treatment.  
Type IIa



May 14, 2024	2.03 CARATS
SI Report No. G543435481	VSI
SQUARE CUSHION BRILLIANT	67.1%
1.59 x 1.72 x 4.86 MM	Medium to Slightly Thick (Faceted)
Color Weight	Polished
Color Grade	EXCELLENT
Clarity Grade	EXCELLENT
Depth	Fluorescence
Table	Symmetry
Girdle	Inscriptions(s)
	NONE
	689125343435481

Comments:

The Laboratory Crown Diamond was grown using a High Pressure High Temperature (HPHT) growth process and may include post-growth treatment.

Type Ila