



**INTERNATIONAL
GEMOLOGICAL
INSTITUTE**

ELECTRONIC COPY

LG634433667
Report verification at igi.org

DIAMOND REPORT



May 17, 2024

IGI Report Number **LG634433667**

| | |
|-------------|--------------------------|
| Description | LABORATORY GROWN DIAMOND |
|-------------|--------------------------|

Shape and Cutting Style

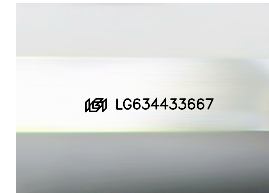
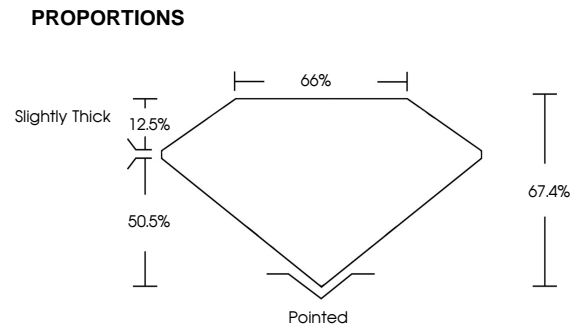
CUT CORNERED
RECTANGULAR MODIFIED
BRILLIANT

Measurements **7.43 X 5.36 X 3.61 MM**

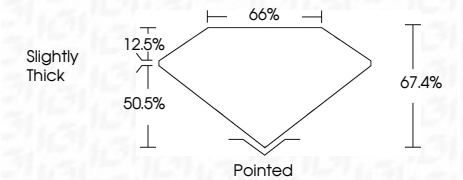
GRADING RESULTS

Carat Weight **1.24 CARAT**

Color Grade **D**

Clarity Grade **VVS 2**

Sample Image Used



ADDITIONAL GRADING INFORMATION

Polish **EXCELLENT**Symmetry **EXCELLENT**Fluorescence **NONE**Inscription(s)  LG634433667

Comments: This Laboratory Grown Diamond was created by Chemical Vapor Deposition (CVD) growth process and may include post-growth treatment.
Type IIa

COLOR

D E F G H I J Faint Very Light Light

CLARITY

IF WS¹⁻² VS¹⁻² SI¹⁻² I¹⁻³

| | | | | |
|------------------------|--------------------------------|---------------------------|----------------------|----------|
| Internally Flawless | Very Very Slightly Included | Very Slightly Included | Slightly Included | Included |
|------------------------|--------------------------------|---------------------------|----------------------|----------|



© IGI 2020, International Gemological Institute

FD - 10 20

www.igi.org



IGI

| | | |
|---------------------------------------|-------------------------|--|
| May 17, 2024 | GI Report No. LG3443567 | |
| OUT CORNERED RECT. MODIFIED BRILLIANT | | |
| 1.24 CARAT | | |
| D | | |
| VVS 2 | | |
| 67.4% | | |
| 66% | | |
| Slightly Thick | | |
| | | |
| Polished | | |
| EXCELLENT | | |
| EXCELLENT | | |
| NONE | | |
| 1691 LG3443567 | | |

Comments:

This Laboratory Grown Diamond was created by Chemical Vapor Deposition (CVD) growth process and may include post-growth treatment.

Type IId