



**ELECTRONIC COPY**

LG634429921  
Report verification at igi.org



May 22, 2024  
IGI Report Number **LG634429921**  
Description **LABORATORY GROWN DIAMOND**  
Shape and Cutting Style **CUSHION BRILLIANT**  
Measurements **8.58 X 6.57 X 4.37 MM**  
**GRADING RESULTS**  
Carat Weight **2.07 CARATS**  
Color Grade **FANCY INTENSE BLUE**  
Clarity Grade **SI 1**

**LABORATORY GROWN DIAMOND REPORT**

May 22, 2024  
IGI Report Number **LG634429921**  
Description **LABORATORY GROWN DIAMOND**  
Shape and Cutting Style **CUSHION BRILLIANT**  
Measurements **8.58 X 6.57 X 4.37 MM**

**GRADING RESULTS**

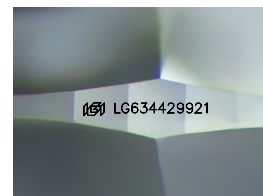
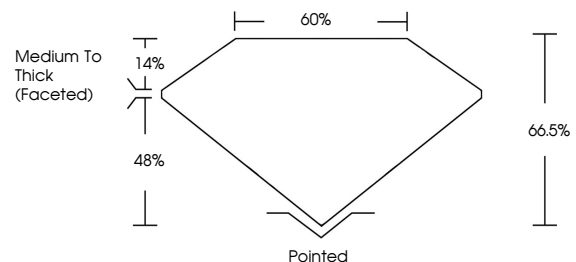
Carat Weight **2.07 CARATS**  
Color Grade **FANCY INTENSE BLUE**  
Clarity Grade **SI 1**

**ADDITIONAL GRADING INFORMATION**

Polish **EXCELLENT**  
Symmetry **EXCELLENT**  
Fluorescence **NONE**  
Inscription(s) **IGI LG634429921**

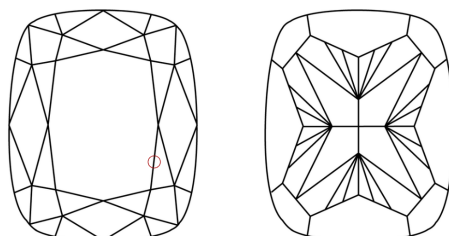
Comments: This Laboratory Grown Diamond was created by Chemical Vapor Deposition (CVD) growth process.  
Indications of post-growth treatment.

**PROPORTIONS**



Sample Image Used

**CLARITY CHARACTERISTICS**



**KEY TO SYMBOLS**

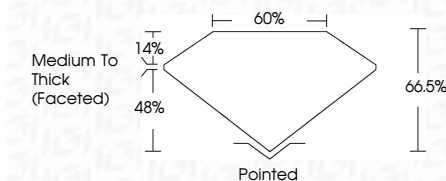
Red symbols indicate internal characteristics.  
Green symbols indicate external characteristics.

**COLOR**

D E F G H I J Faint Very Light Light

**CLARITY**

IF	VS <sup>1-2</sup>	VS <sup>1-2</sup>	SI <sup>1-2</sup>	I <sup>1-3</sup>
Internally Flawless	Very Very Slightly Included	Very Slightly Included	Slightly Included	Included



**ADDITIONAL GRADING INFORMATION**

Polish **EXCELLENT**  
Symmetry **EXCELLENT**  
Fluorescence **NONE**  
Inscription(s) **IGI LG634429921**  
Comments: This Laboratory Grown Diamond was created by Chemical Vapor Deposition (CVD) growth process.  
Indications of post-growth treatment.



**IGI**



May 22, 2024  
IGI Report No LG634429921  
**CUSHION BRILLIANT**  
8.58 X 6.57 X 4.37 MM  
2.07 CARATS  
FANCY INTENSE BLUE  
SI 1  
66.5%  
0.05  
Medium To Thick (Faceted)  
Pointed  
EXCELLENT  
EXCELLENT  
NONE  
IGI LG634429921

Comments: This Laboratory Grown Diamond was created by Chemical Vapor Deposition (CVD) growth process.  
Indications of post-growth treatment.