

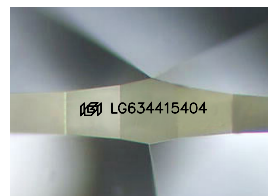
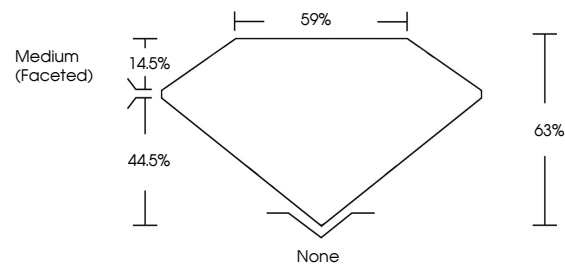


**ELECTRONIC COPY**

## LABORATORY GROWN DIAMOND REPORT

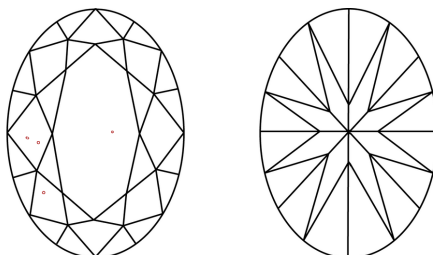
LG634415404  
Report verification at [lgi.org](https://lgi.org)

## PROPORTIONS



Sample Image Used

## CLARITY CHARACTERISTICS



### KEY TO SYMBOLS

Red symbols indicate internal characteristics.  
Green symbols indicate external characteristics.

## COLOR

D E F G H I J Faint Very Light Light

## CLARITY

IF	VVS <sup>1-2</sup>	VS <sup>1-2</sup>	SI <sup>1-2</sup>	I <sup>1-3</sup>
Internally Flawless	Very Very Slightly Included	Very Slightly Included	Slightly Included	Included



© IGI 2020, International Gemological Institute

FD - 10 20

## DIAMOND REPORT



May 18, 2024

IGI Report Number **LG634415404**

Description	LABORATORY GROWN DIAMOND
-------------	--------------------------

Shape and Cutting Style **OVAL BRILLIANT**

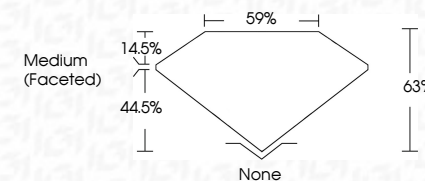
Measurements **8.83 X 6.10 X 3.84 MM**

## GRADING RESULTS

Carat Weight **1.31 CARAT**

Color Grade F

Clarity Grade VS 1



### ADDITIONAL GRADING INFORMATION

Polish **EXCELLENT**Symmetry **EXCELLENT**Fluorescence **NONE**Inscription(s)  LG634415404

Comments: This Laboratory Grown Diamond was created by Chemical Vapor Deposition (CVD) growth process and may include post-growth treatment.  
Type IIa



May 18, 2024  
GI Report No LG634415404  
COVAL BRILLIANT

3.83 X 6.10 X 3.84 MM	1.31 CARAT
Carat Weight	VS 1
Color Grade	68%
Clarity Grade	59%
Depth	Medium (Faceted)
Table	None
Grade	EXCELLENT
Culet	EXCELLENT
Polish	Symmetry
Fluorescence	None
	100% (254nm/150nm)

**Comments:**  
This Laboratory Grown Diamond was created by Chemical Vapor Deposition (CVD) growth process and may include post-growth treatment.