



**ELECTRONIC COPY**

LG634405144  
Report verification at igi.org



May 18, 2024

IGI Report Number **LG634405144**

Description **LABORATORY GROWN DIAMOND**

Shape and Cutting Style **ROUND BRILLIANT**

Measurements **9.57 - 9.66 X 5.89 MM**

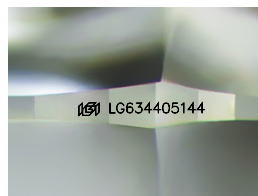
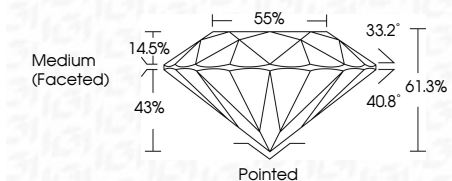
**GRADING RESULTS**

Carat Weight **3.31 CARATS**

Color Grade **FANCY VIVID BLUE**

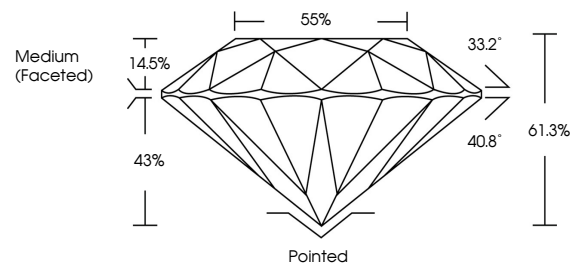
Clarity Grade **VS 1**

Cut Grade **IDEAL**

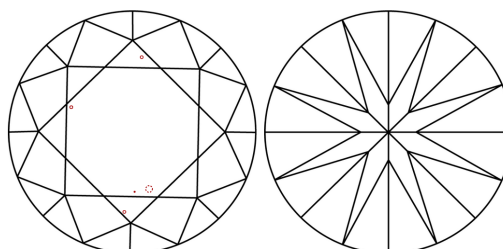


Sample Image Used

**PROPORTIONS**



**CLARITY CHARACTERISTICS**



**KEY TO SYMBOLS**

Red symbols indicate internal characteristics.  
Green symbols indicate external characteristics.

**COLOR**

D E F G H I J Faint Very Light Light

**CLARITY**

IF	VS <sup>1-2</sup>	VS <sup>1-2</sup>	SI <sup>1-2</sup>	I <sup>1-3</sup>
Internally Flawless	Very Very Slightly Included	Very Slightly Included	Slightly Included	Included

**ADDITIONAL GRADING INFORMATION**

Polish **EXCELLENT**

Symmetry **EXCELLENT**

Fluorescence **NONE**

Inscription(s) **IGI LG634405144**

Comments: This Laboratory Grown Diamond was created by Chemical Vapor Deposition (CVD) growth process. Indications of post-growth treatment.



**IGI**

May 18, 2024  
IGI Report No LG634405144  
**ROUND BRILLIANT**

**3.31 CARATS**  
Carat Weight  
**FANCY VIVID BLUE**  
Color Grade

**VS 1**  
Clarity Grade  
**IDEAL**  
Cut Grade  
**61.3%**  
Depth  
**55%**  
Table  
**Medium (Faceted)**  
Girdle

**Pointed**  
Culet  
**EXCELLENT**  
Polish  
**EXCELLENT**  
Symmetry  
**EXCELLENT**  
Fluorescence  
**NONE**  
Inscriptions(s)  
IGI LG634405144

Comments: This Laboratory Grown Diamond was created by Chemical Vapor Deposition (CVD) growth process. Indications of post-growth treatment.