

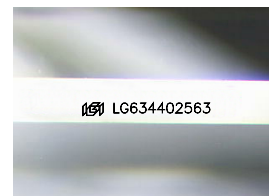
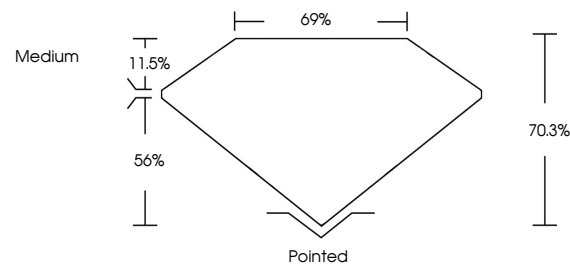


**ELECTRONIC COPY**

## LABORATORY GROWN DIAMOND REPORT

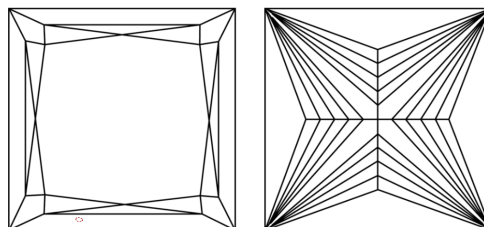
LG634402563  
Report verification at [igi.org](https://igi.org)

## PROPORTIONS



Sample Image Used

## CLARITY CHARACTERISTICS



### KEY TO SYMBOLS

Red symbols indicate internal characteristics.  
Green symbols indicate external characteristics.

## COLOR

D E F G H I J Faint Very Light Light

## CLARITY

IF	VVS <sup>1-2</sup>	VS <sup>1-2</sup>	SI <sup>1-2</sup>	I <sup>1-3</sup>
Internally Flawless	Very Very Slightly Included	Very Slightly Included	Slightly Included	Included



© IGI 2020, International Gemological Institute

FD - 10 20

**www.igi.org**

## DIAMOND REPORT



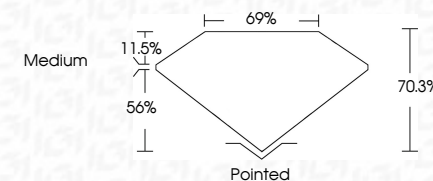
May 20, 2024

IGI Report Number **LG634402563**Description **LABORATORY GROWN DIAMOND**Shape and Cutting Style **PRINCESS CUT**

Measurements 6.28 X 6.27 X 4.41 MM

## GRADING RESULTS

Carat Weight **1.51 CARAT**

Color Grade **G**Clarity Grade **VVS 2**

### ADDITIONAL GRADING INFORMATION

Polish **EXCELLENCE**Symmetry **EXCELLEN**Fluorescence NONIInscription(s) **13** LG63440256

Comments: This Laboratory Grown Diamond was created by Chemical Vapor Deposition (CVD) growth process and may include post-growth treatment.  
Type IIa



IG

May 20, 2024  
 IGI Report No LG63402563  
 PRINCESS CLIT

1.51 CARAT	VS 2	69%	Medium	Pointed	EXCELLENT	EXCELLENT	NONE	Serial GS53477553		
Carat Weight	Color Grade	Clarity Grade	Depth	Table	Girdle	Quilet	Polish	Symmetry	Fluorescence	Proportions(s)

**Comments:**  
This Laboratory Grown Diamond was created by Chemical Vapor Deposition (CVD) growth process and may include post-growth treatment.