



ELECTRONIC COPY

LABORATORY GROWN DIAMOND REPORT

May 5, 2024	
IGI Report Number	LG633497659
Description	LABORATORY GROWN DIAMOND
Shape and Cutting Style	CUT CORNERED RECTANGULAR MODIFIED BRILLIANT
Measurements	7.23 X 5.02 X 3.46 MM

GRADING RESULTS

Carat Weight	1.05 CARAT
Color Grade	D
Clarity Grade	VVS 2

ADDITIONAL GRADING INFORMATION

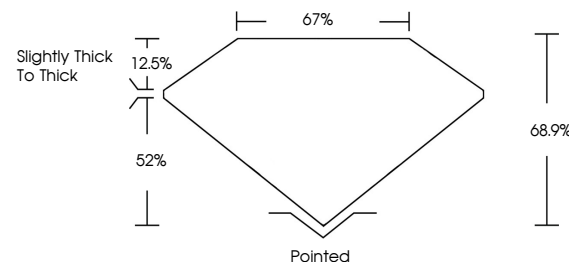
Polish	EXCELLENT
Symmetry	EXCELLENT
Fluorescence	NONE

Inscription(s)  LG633497659

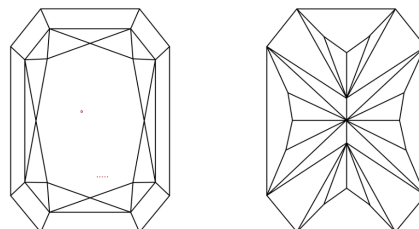
Comments: This Laboratory Grown Diamond was created by Chemical Vapor Deposition (CVD) growth process and may include post-growth treatment.
Type IIa

LG633497659
Report verification at lgi.org

PROPORTIONS

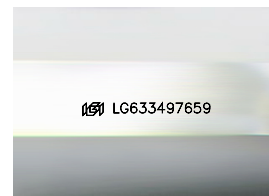


CLARITY CHARACTERISTICS



KEY TO SYMBOLS

Red symbols indicate internal characteristics.
Green symbols indicate external characteristics.



Sample Image Used

COLOR

D E F G H I J Faint Very Light Light

CLARITY

IF	VVS ^{1,2}	VS ^{1,2}	SI ^{1,2}	I ^{1,3}
Internally Flawless	Very Very Slightly Included	Very Slightly Included	Slightly Included	Included



© IGI 2020, International Gemological Institute

FD - 10 20

www.igi.org

DIAMOND REPORT



May 5, 2024

IGI Report Number LG633497659

Description **LABORATORY GROWN DIAMOND**

Shape and Cutting Style

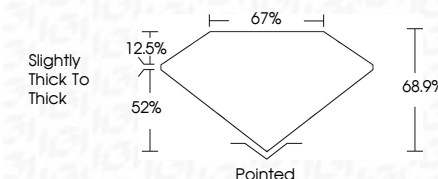
CUT CORNERED
RECTANGULAR MODIFIED
BRILLIANT

Measurements **7.23 X 5.02 X 3.46 MM**

GRADING RESULTS

Carat Weight 1.05 CARAT

Color Grade D

Clarity Grade WS 2

ADDITIONAL GRADING INFORMATION

Polish **EXCELLENT**Symmetry **EXCELLENT**Fluorescence **NONE**Inscription(s) 113 LG633497659

Comments: This Laboratory Grown Diamond was created by Chemical Vapor Deposition (CVD) growth process and may include post-growth treatment.
Type IIa



May 5, 2024	GI Report No. LG33497159		CUT CORNBED RECT. MODIFIED BRILLIANT	
23 X 23 X 5.02 X 3.46 MM	Color: White	Carat Weight: 1.05 CARAT	D: 6.82	
	Clarity: Grade		W: 2	
	Depth: Grade		68.9%	
	Table: Grade		67%	
				Slightly Thick to Thick
	Color: Quiet			Poished
	Symmetry: Polished			EXCELLENT
	Fluorescence: Fluorescence			EXCELLENT
	Inscriptions(s):			NONE
				4891 LG33497159

Comments:

The Laboratory Grown Diamond was analyzed using the HPHT growth process and may include post-growth treatment.

Type Ila