



ELECTRONIC COPY

LG633496768
Report verification at igi.org



May 16, 2024
IGI Report Number **LG633496768**
Description **LABORATORY GROWN DIAMOND**
Shape and Cutting Style **CUT CORNERED
RECTANGULAR MODIFIED
BRILLIANT**
Measurements **7.71 X 5.33 X 3.72 MM**
GRADING RESULTS
Carat Weight **1.51 CARAT**
Color Grade **FANCY INTENSE YELLOW**
Clarity Grade **VS 1**

LABORATORY GROWN DIAMOND REPORT

May 16, 2024
IGI Report Number **LG633496768**
Description **LABORATORY GROWN DIAMOND**
Shape and Cutting Style **CUT CORNERED RECTANGULAR
MODIFIED BRILLIANT**
Measurements **7.71 X 5.33 X 3.72 MM**

GRADING RESULTS

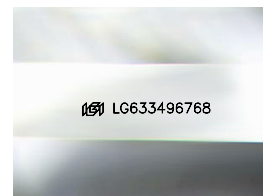
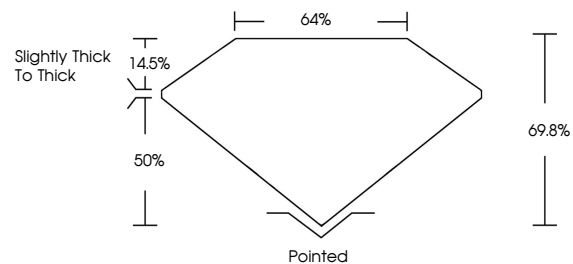
Carat Weight **1.51 CARAT**
Color Grade **FANCY INTENSE YELLOW**
Clarity Grade **VS 1**

ADDITIONAL GRADING INFORMATION

Polish **EXCELLENT**
Symmetry **EXCELLENT**
Fluorescence **NONE**
Inscription(s) **IGI LG633496768**

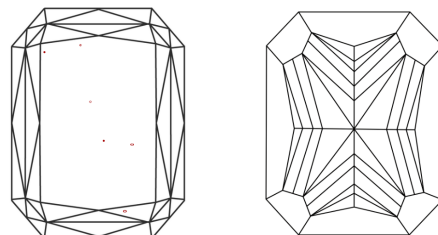
Comments: This Laboratory Grown Diamond was created by Chemical Vapor Deposition (CVD) growth process and may include post-growth treatment.

PROPORTIONS



Sample Image Used

CLARITY CHARACTERISTICS



KEY TO SYMBOLS

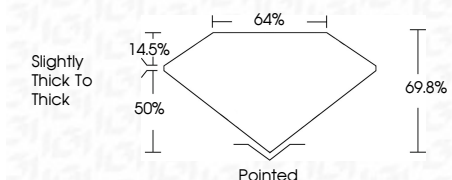
Red symbols indicate internal characteristics.
Green symbols indicate external characteristics.

COLOR

D E F G H I J Faint Very Light Light

CLARITY

IF	VS ¹⁻²	VS ¹⁻²	SI ¹⁻²	I ¹⁻³
Internally Flawless	Very Very Slightly Included	Very Slightly Included	Slightly Included	Included



ADDITIONAL GRADING INFORMATION

Polish **EXCELLENT**
Symmetry **EXCELLENT**
Fluorescence **NONE**
Inscription(s) **IGI LG633496768**
Comments: This Laboratory Grown Diamond was created by Chemical Vapor Deposition (CVD) growth process and may include post-growth treatment.



IGI



May 16, 2024
IGI Report No. LG633496768
CUT CORNERED RECT. MODIFIED BRILLIANT
7.71 X 5.33 X 3.72 MM
1.51 CARAT
FANCY INTENSE YELLOW
VS 1
69.8%
64%
Slightly Thick To Thick
Pointed
EXCELLENT
EXCELLENT
NONE
IGI LG633496768
Comments: This Laboratory Grown Diamond was created by Chemical Vapor Deposition (CVD) growth process and may include post-growth treatment.