



ELECTRONIC COPY

LG633494470
Report verification at igi.org



May 11, 2024

IGI Report Number LG633494470

Description LABORATORY GROWN DIAMOND

Shape and Cutting Style PRINCESS CUT

Measurements 6.09 X 5.92 X 4.77 MM

GRADING RESULTS

Carat Weight 1.55 CARAT

Color Grade FANCY VIVID PINK

Clarity Grade VS 1

LABORATORY GROWN DIAMOND REPORT

May 11, 2024

IGI Report Number LG633494470

Description LABORATORY GROWN DIAMOND

Shape and Cutting Style PRINCESS CUT

Measurements 6.09 X 5.92 X 4.77 MM

GRADING RESULTS

Carat Weight 1.55 CARAT

Color Grade FANCY VIVID PINK

Clarity Grade VS 1

ADDITIONAL GRADING INFORMATION

Polish EXCELLENT

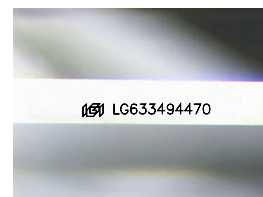
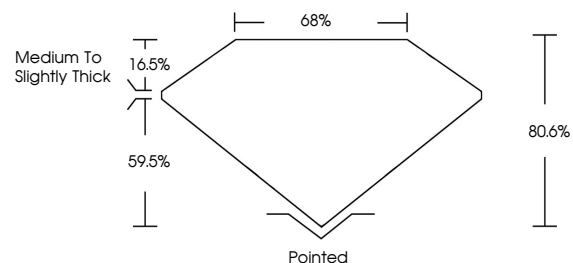
Symmetry EXCELLENT

Fluorescence SLIGHT

Inscription(s) IGI LG633494470

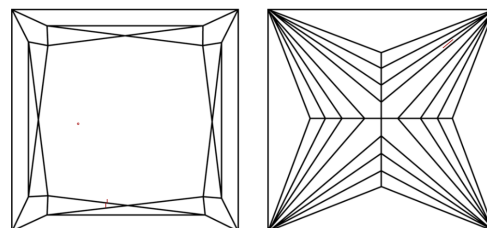
Comments: This Laboratory Grown Diamond was created by Chemical Vapor Deposition (CVD) growth process. Indications of post-growth treatment.

PROPORTIONS



Sample Image Used

CLARITY CHARACTERISTICS



KEY TO SYMBOLS

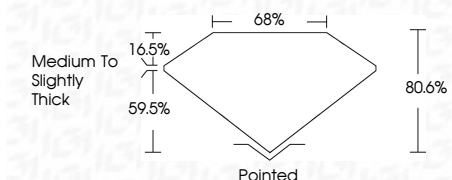
Red symbols indicate internal characteristics. Green symbols indicate external characteristics.

COLOR

D E F G H I J Faint Very Light Light

CLARITY

IF VS 1-2 VS 1-2 SI 1-2 I 1-3 Internally Flawless Very Very Slightly Included Very Slightly Included Slightly Included Included



ADDITIONAL GRADING INFORMATION

Polish EXCELLENT

Symmetry EXCELLENT

Fluorescence SLIGHT

Inscription(s) IGI LG633494470

Comments: This Laboratory Grown Diamond was created by Chemical Vapor Deposition (CVD) growth process. Indications of post-growth treatment.



IGI



Summary of report details including date, report number, description, measurements, grading results, and additional information.

Comments: This Laboratory Grown Diamond was created by Chemical Vapor Deposition (CVD) growth process. Indications of post-growth treatment.