



ELECTRONIC COPY

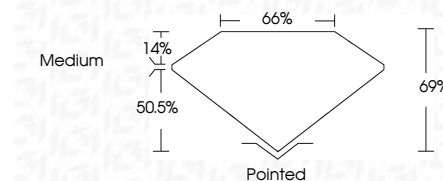
LG633494389
Report verification at igi.org



May 13, 2024
IGI Report Number **LG633494389**
Description **LABORATORY GROWN DIAMOND**
Shape and Cutting Style **CUT CORNERED
RECTANGULAR MODIFIED
BRILLIANT**
Measurements **7.44 X 5.35 X 3.69 MM**

GRADING RESULTS

Carat Weight **1.35 CARAT**
Color Grade **FANCY INTENSE YELLOW**
Clarity Grade **VS 2**



ADDITIONAL GRADING INFORMATION

Polish **EXCELLENT**
Symmetry **EXCELLENT**
Fluorescence **NONE**
Inscription(s) **IGI LG633494389**
Comments: This Laboratory Grown Diamond was created by Chemical Vapor Deposition (CVD) growth process and may include post-growth treatment.



May 13, 2024
IGI Report No. LG633494389
CUT CORNERED RECT. MODIFIED BRILLIANT
7.44 X 5.35 X 3.69 MM
1.35 CARAT
FANCY INTENSE YELLOW
VS 2
69%
50.5%
Medium
Pointed
EXCELLENT
EXCELLENT
NONE
IGI LG633494389
Comments: This Laboratory Grown Diamond was created by Chemical Vapor Deposition (CVD) growth process and may include post-growth treatment.

LABORATORY GROWN DIAMOND REPORT

May 13, 2024
IGI Report Number **LG633494389**
Description **LABORATORY GROWN DIAMOND**
Shape and Cutting Style **CUT CORNERED RECTANGULAR
MODIFIED BRILLIANT**
Measurements **7.44 X 5.35 X 3.69 MM**

GRADING RESULTS

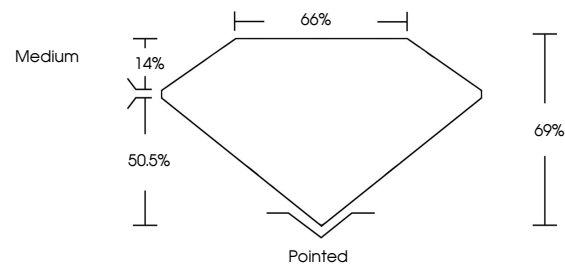
Carat Weight **1.35 CARAT**
Color Grade **FANCY INTENSE YELLOW**
Clarity Grade **VS 2**

ADDITIONAL GRADING INFORMATION

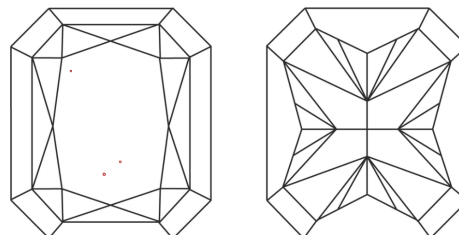
Polish **EXCELLENT**
Symmetry **EXCELLENT**
Fluorescence **NONE**
Inscription(s) **IGI LG633494389**

Comments: This Laboratory Grown Diamond was created by Chemical Vapor Deposition (CVD) growth process and may include post-growth treatment.

PROPORTIONS

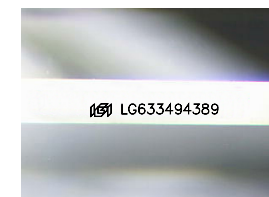


CLARITY CHARACTERISTICS



KEY TO SYMBOLS

Red symbols indicate internal characteristics.
Green symbols indicate external characteristics.



Sample Image Used

COLOR

D E F G H I J Faint Very Light Light

CLARITY

IF	VS ¹⁻²	VS ¹⁻²	SI ¹⁻²	I ¹⁻³
Internally Flawless	Very Very Slightly Included	Very Slightly Included	Slightly Included	Included

