

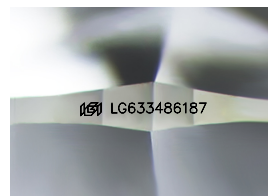
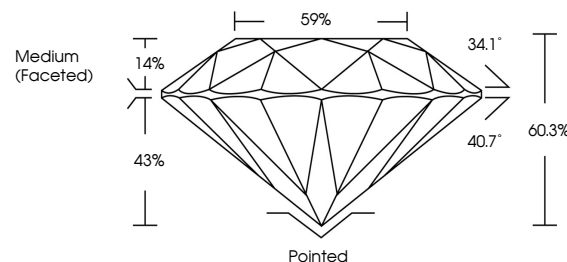


ELECTRONIC COPY

LABORATORY GROWN DIAMOND REPORT

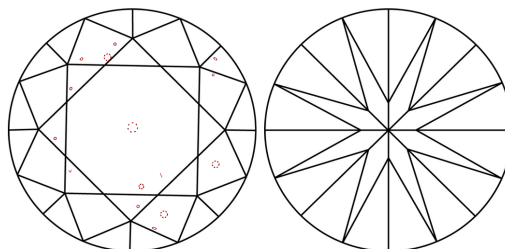
LG633486187
Report verification at lgi.org

PROPORTIONS



Sample Image Used

CLARITY CHARACTERISTICS



KEY TO SYMBOLS

Red symbols indicate internal characteristics.
Green symbols indicate external characteristics.

COLOR

D E F G H I J Faint Very Light Light

CLARITY

IF	VVS ¹⁻²	VS ¹⁻²	SI ¹⁻²	I ¹⁻³
Internally Flawless	Very Very Slightly Included	Very Slightly Included	Slightly Included	Included



© IGI 2020, International Gemological Institute

FD - 10 20

DIAMOND REPORT



May 10, 2024

IGI Report Number **LG633486187**

Description	LABORATORY GROWN DIAMOND
-------------	--------------------------

Shape and Cutting Style **ROUND BRILLIANT**

Measurements 10.15 - 10.21 X 6.14 MM

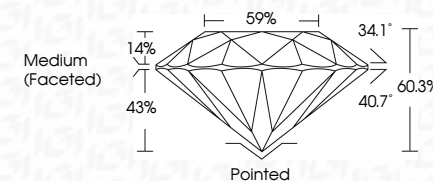
GRADING RESULTS

Carat Weight **3.90 CARATS**

Color Grade H

Clarity Grade VS 1

Cut Grade **IDEAL**



ADDITIONAL GRADING INFORMATION

Polish **EXCELLENT**Symmetry **EXCELLENT**Fluorescence **NONE**Inscription(s) LG633486187

Comments: This Laboratory Grown Diamond was created by Chemical Vapor Deposition (CVD) growth process and may include post-growth treatment.
Type IIa



May 10, 2024	GI Report No LG3346187	
ROUND BRILLIANT		
10.15 - 10.21 X 6.14 MM	3.90 CARATS	
Color Weight	H	
Color Grade	VS 1	
Clarity Grade	IDeal	
Cut Grade	60.3%	
Depth	59%	
Girdle	Medium (Faceted)	
Culet	Pointed	
Polish	EXCELLENT	
Symmetry	EXCELLENT	
Fluorescence	NONE	
Inscriptions(s)	lg3 LG36466187	
Comments:		
The Laboratory Crown Diamond was certified as a Natural, Conflict-Free, GIA® growth process and may include post-growth treatment. Type Ila		