



ELECTRONIC COPY

LG633485667
Report verification at igi.org



May 1, 2024

IGI Report Number **LG633485667**

Description **LABORATORY GROWN DIAMOND**

Shape and Cutting Style **ROUND BRILLIANT**

Measurements **6.73 - 6.76 X 4.14 MM**

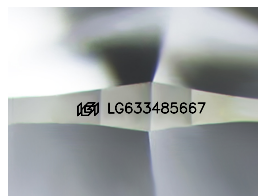
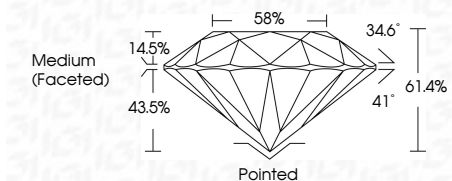
GRADING RESULTS

Carat Weight **1.15 CARAT**

Color Grade **D**

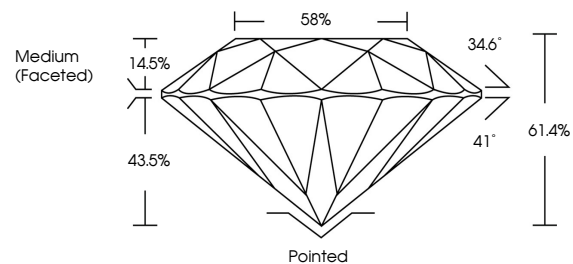
Clarity Grade **VVS 2**

Cut Grade **IDEAL**

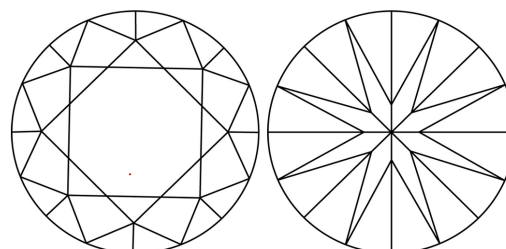


Sample Image Used

PROPORTIONS



CLARITY CHARACTERISTICS



KEY TO SYMBOLS

Red symbols indicate internal characteristics.
Green symbols indicate external characteristics.

COLOR

D E F G H I J Faint Very Light Light

CLARITY

IF	VVS ¹⁻²	VS ¹⁻²	SI ¹⁻²	I ¹⁻³
Internally Flawless	Very Very Slightly Included	Very Slightly Included	Slightly Included	Included

ADDITIONAL GRADING INFORMATION

Polish **EXCELLENT**

Symmetry **EXCELLENT**

Fluorescence **NONE**

Inscription(s) **IGI LG633485667**

Comments: This Laboratory Grown Diamond was created by Chemical Vapor Deposition (CVD) growth process and may include post-growth treatment. Type IIa



IGI

May 1, 2024	IGI Report No LG633485667	1.15 CARAT	D	Pointed
ROUND BRILLIANT	6.73 - 6.76 X 4.14 MM	VVS 2	IDEAL	EXCELLENT
Color Grade	Cut Grade	Depth	61.4%	EXCELLENT
Clarity Grade	Table	Girdle	Medium (Faceted)	NONE
Fluorescence	Inscriptions(s)	IGI LG633485667		

Comments: This Laboratory Grown Diamond was created by Chemical Vapor Deposition (CVD) growth process and may include post-growth treatment. Type IIa