

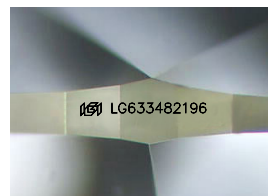
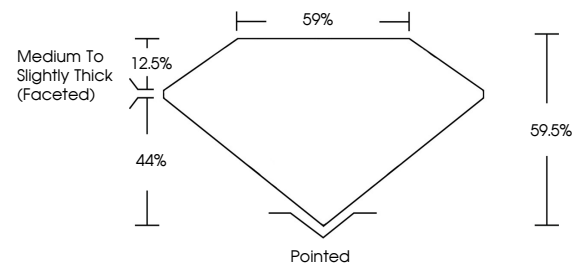


ELECTRONIC COPY

LABORATORY GROWN DIAMOND REPORT

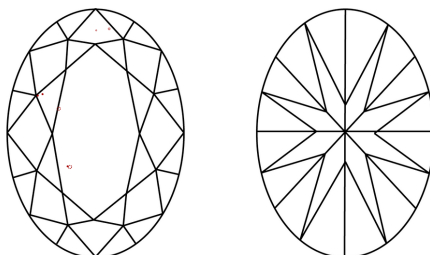
LG633482196
Report verification at igi.org

PROPORTIONS



Sample Image Used

CLARITY CHARACTERISTICS



KEY TO SYMBOLS

Red symbols indicate internal characteristics.
Green symbols indicate external characteristics.

COLOR

D E F G H I J Faint Very Light Light

CLARITY

IF	VVS ¹⁻²	VS ¹⁻²	SI ¹⁻²	I ¹⁻³
Internally Flawless	Very Very Slightly Included	Very Slightly Included	Slightly Included	Included



© IGI 2020, International Gemological Institute

FD - 10 20

www.igi.org

DIAMOND REPORT



May 3, 2024

IGI Report Number **LG633482196**

Description	LABORATORY GROWN DIAMOND
-------------	--------------------------

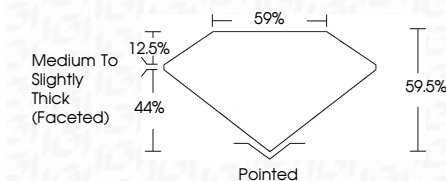
Shape and Cutting Style **OVAL BRILLIANT**

Measurements **8.68 X 5.93 X 3.53 MM**

GRADING RESULTS

Carat Weight 1.09 CARAT

Color Grade

Clarity Grade VVS 2

ADDITIONAL GRADING INFORMATION

Polish **EXCELLENT**Symmetry **EXCELLENT**

Fluorescence NON

Inscription(s) LG633482196

Comments: This Laboratory Grown Diamond was created by Chemical Vapor Deposition (CVD) growth process and may include post-growth treatment.
Type IIa



May 3, 2024	1.09 CARAT	
GI Report No LG533482795	VVS 2	Polished
OVAL BRILLIANT	59.6%	EXCELLENT
	59%	EXCELLENT
	Medium to Slightly Thick (Faceted)	NONE
		Serial LG533482795
6.68 X 5.09 X 3.53 MM		
Carat Weight	Clarity Grade	Culet
Color Grade	Depth	Polish
	Table	Symmetry
	Grade	Fluorescence
		Inscriptions(s)

Comments:
This Laboratory Grown Diamond was created by Chemical Vapor Deposition (CVD) growth process and may include cost-growth treatment.
Type IIa