



ELECTRONIC COPY

LG633481797
Report verification at igi.org



May 6, 2024

IGI Report Number **LG633481797**

Description **LABORATORY GROWN DIAMOND**

Shape and Cutting Style **CUT CORNERED
RECTANGULAR MODIFIED
BRILLIANT**

Measurements **8.59 X 6.01 X 3.92 MM**

GRADING RESULTS

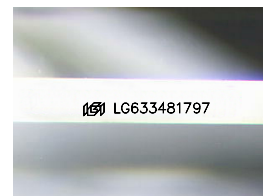
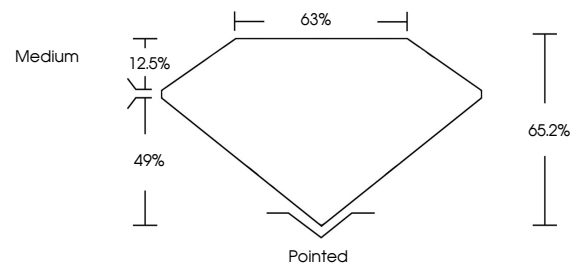
Carat Weight **1.74 CARAT**

Color Grade **G**

Clarity Grade **VS 1**

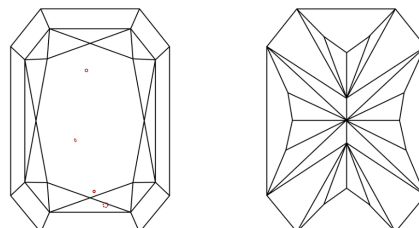
Cut Grade **EXCELLENT**

PROPORTIONS



Sample Image Used

CLARITY CHARACTERISTICS



KEY TO SYMBOLS

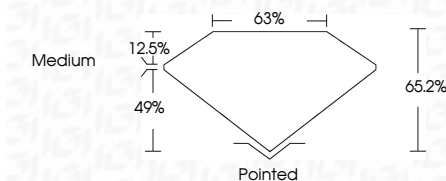
Red symbols indicate internal characteristics.
Green symbols indicate external characteristics.

COLOR

D E F G H I J Faint Very Light Light

CLARITY

IF	VS ¹⁻²	VS ¹⁻²	SI ¹⁻²	I ¹⁻³
Internally Flawless	Very Very Slightly Included	Very Slightly Included	Slightly Included	Included



ADDITIONAL GRADING INFORMATION

Polish **EXCELLENT**

Symmetry **EXCELLENT**

Fluorescence **NONE**

Inscription(s) **IGI LG633481797**

Comments: This Laboratory Grown Diamond was created by Chemical Vapor Deposition (CVD) growth process and may include post-growth treatment. Type IIa



IGI

May 6, 2024	IGI Report No LG633481797	CUT CORNERED RECT. MODIFIED BRILLIANT	1.74 CARAT	G	VS 1	EXCELLENT	66.2%	63%	Medium	Pointed	EXCELLENT	EXCELLENT	NONE	IGI LG633481797
8.59 X 6.01 X 3.92 MM	Carat Weight	Color Grade	Clarity Grade	Cut Grade	Depth	Table	Girdle	Culet	Polish	Symmetry	Fluorescence	Inscription(s)	Comments: This Laboratory Grown Diamond was created by Chemical Vapor Deposition (CVD) growth process and may include post-growth treatment. Type IIa	