



ELECTRONIC COPY

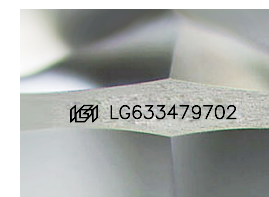
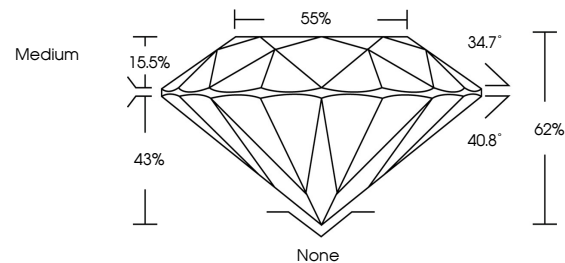
LG633479702
Report verification at igi.org



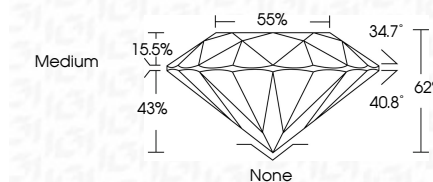
August 14, 2024
IGI Report Number **LG633479702**
Description **LABORATORY GROWN DIAMOND**
Shape and Cutting Style **ROUND BRILLIANT**
Measurements **7.43 - 7.45 X 4.62 MM**
GRADING RESULTS
Carat Weight **1.57 CARAT**
Color Grade **H**
Clarity Grade **VS 1**
Cut Grade **EXCELLENT**

August 14, 2024
IGI Report Number **LG633479702**
Description **LABORATORY GROWN DIAMOND**
Shape and Cutting Style **ROUND BRILLIANT**
Measurements **7.43 - 7.45 X 4.62 MM**
GRADING RESULTS
Carat Weight **1.57 CARAT**
Color Grade **H**
Clarity Grade **VS 1**
Cut Grade **EXCELLENT**

PROPORTIONS



Sample Image Used



ADDITIONAL GRADING INFORMATION

Polish **VERY GOOD**
Symmetry **EXCELLENT**
Fluorescence **NONE**
Inscription(s) **IGI LG633479702**

ADDITIONAL GRADING INFORMATION

Polish **VERY GOOD**
Symmetry **EXCELLENT**
Fluorescence **NONE**
Inscription(s) **IGI LG633479702**

COLOR

D E F G H I J Faint Very Light Light

CLARITY

IF	VS ¹⁻²	VS ¹⁻²	SI ¹⁻²	I ¹⁻³
Internally Flawless	Very Very Slightly Included	Very Slightly Included	Slightly Included	Included



IGI



August 14, 2024	IGI Report No LG633479702	1.57 CARAT	H	VS 1	EXCELLENT	62%	85%	Medium	None	VERY GOOD	EXCELLENT	NONE	IGI LG633479702
ROUND BRILLIANT	7.43 - 7.45 X 4.62 MM	Color Grade	Cut Grade	Depth	Table	Girdle	Color	Polish	Symmetry	Fluorescence	Inscription(s)		