



ELECTRONIC COPY

LG633479179
Report verification at igi.org

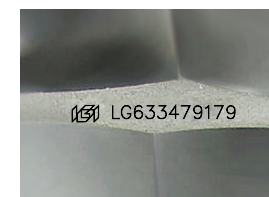
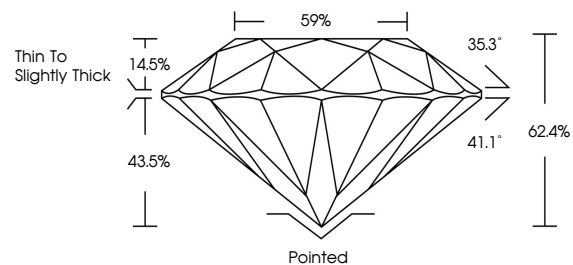


August 14, 2024
IGI Report Number **LG633479179**
Description **LABORATORY GROWN DIAMOND**
Shape and Cutting Style **ROUND BRILLIANT**
Measurements **6.38 - 6.39 X 3.99 MM**
GRADING RESULTS
Carat Weight **1.01 CARAT**
Color Grade **I**
Clarity Grade **VVS 2**
Cut Grade **EXCELLENT**

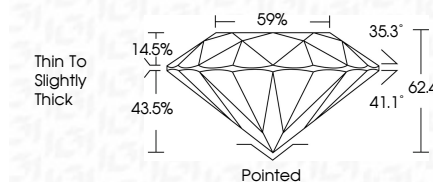
August 14, 2024
IGI Report Number **LG633479179**
Description **LABORATORY GROWN DIAMOND**
Shape and Cutting Style **ROUND BRILLIANT**
Measurements **6.38 - 6.39 X 3.99 MM**
GRADING RESULTS
Carat Weight **1.01 CARAT**
Color Grade **I**
Clarity Grade **VVS 2**
Cut Grade **EXCELLENT**

ADDITIONAL GRADING INFORMATION
Polish **EXCELLENT**
Symmetry **EXCELLENT**
Fluorescence **NONE**
Inscription(s) **IGI LG633479179**

PROPORTIONS



Sample Image Used



COLOR

D E F G H I J Faint Very Light Light

CLARITY

IF WS¹⁻² VS¹⁻² SI¹⁻² I¹⁻³
Internally Flawless Very Very Slightly Included Very Slightly Included Slightly Included Included

ADDITIONAL GRADING INFORMATION

Polish **EXCELLENT**
Symmetry **EXCELLENT**
Fluorescence **NONE**
Inscription(s) **IGI LG633479179**



IGI

August 14, 2024
IGI Report No **LG633479179**
ROUND BRILLIANT
6.38 - 6.39 X 3.99 MM
Carat Weight **1.01 CARAT**
Color Grade **I**
Clarity Grade **VVS 2**
Cut Grade **EXCELLENT**
Depth **62.4%**
Table **59%**
Girdle **Thin To Slightly Thick**
Culet **Pointed**
Polish **EXCELLENT**
Symmetry **EXCELLENT**
Fluorescence **NONE**
Inscriptions(s) **IGI LG633479179**