



ELECTRONIC COPY

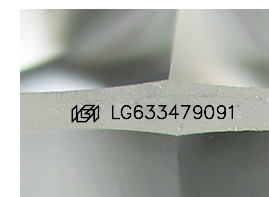
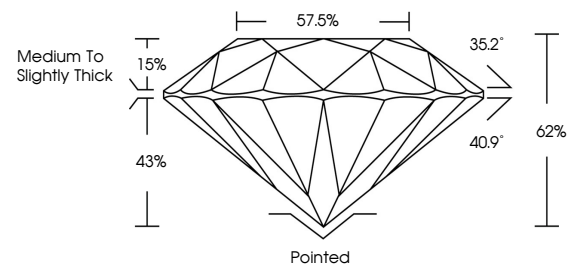
LG633479091
Report verification at igi.org



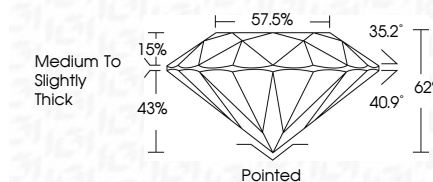
August 14, 2024
IGI Report Number **LG633479091**
Description **LABORATORY GROWN DIAMOND**
Shape and Cutting Style **ROUND BRILLIANT**
Measurements **6.45 - 6.49 X 4.02 MM**
GRADING RESULTS
Carat Weight **1.04 CARAT**
Color Grade **I**
Clarity Grade **VS 1**
Cut Grade **EXCELLENT**

August 14, 2024
IGI Report Number **LG633479091**
Description **LABORATORY GROWN DIAMOND**
Shape and Cutting Style **ROUND BRILLIANT**
Measurements **6.45 - 6.49 X 4.02 MM**
GRADING RESULTS
Carat Weight **1.04 CARAT**
Color Grade **I**
Clarity Grade **VS 1**
Cut Grade **EXCELLENT**

PROPORTIONS



Sample Image Used



ADDITIONAL GRADING INFORMATION
Polish **VERY GOOD**
Symmetry **EXCELLENT**
Fluorescence **NONE**
Inscription(s) **IGI LG633479091**

COLOR

D E F G H I J Faint Very Light Light

CLARITY

IF	VS ¹⁻²	VS ¹⁻²	SI ¹⁻²	I ¹⁻³
Internally Flawless	Very Very Slightly Included	Very Slightly Included	Slightly Included	Included

ADDITIONAL GRADING INFORMATION

Polish **VERY GOOD**
Symmetry **EXCELLENT**
Fluorescence **NONE**
Inscription(s) **IGI LG633479091**



IGI



August 14, 2024
IGI Report No LG633479091
ROUND BRILLIANT
6.45 - 6.49 X 4.02 MM
1.04 CARAT
Color Grade **I**
Clarity Grade **VS 1**
Cut Grade **EXCELLENT**
Depth **62%**
Table **15%**
Girdle **Medium To Slightly Thick**
Culet **Pointed**
Polish **VERY GOOD**
Symmetry **EXCELLENT**
Fluorescence **NONE**
Inscriptions(s) **IGI LG633479091**