



**ELECTRONIC COPY**

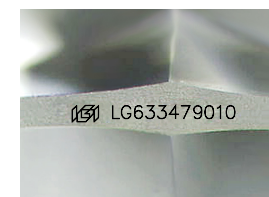
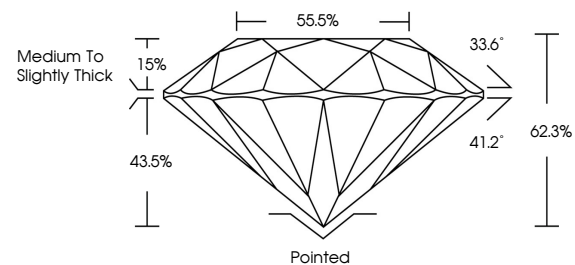
LG633479010  
Report verification at [igi.org](http://igi.org)



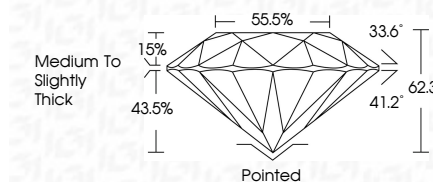
August 14, 2024  
IGI Report Number **LG633479010**  
Description **LABORATORY GROWN DIAMOND**  
Shape and Cutting Style **ROUND BRILLIANT**  
Measurements **6.50 - 6.52 X 4.06 MM**  
**GRADING RESULTS**  
Carat Weight **1.04 CARAT**  
Color Grade **I**  
Clarity Grade **VVS 2**  
Cut Grade **IDEAL**

August 14, 2024  
IGI Report Number **LG633479010**  
Description **LABORATORY GROWN DIAMOND**  
Shape and Cutting Style **ROUND BRILLIANT**  
Measurements **6.50 - 6.52 X 4.06 MM**  
**GRADING RESULTS**  
Carat Weight **1.04 CARAT**  
Color Grade **I**  
Clarity Grade **VVS 2**  
Cut Grade **IDEAL**

**PROPORTIONS**



Sample Image Used



**ADDITIONAL GRADING INFORMATION**  
Polish **EXCELLENT**  
Symmetry **EXCELLENT**  
Fluorescence **NONE**  
Inscription(s) **IGI LG633479010**

**COLOR**

D E F G H I J Faint Very Light Light

**CLARITY**

IF	VS <sup>1-2</sup>	VS <sup>1-2</sup>	SI <sup>1-2</sup>	I <sup>1-3</sup>
Internally Flawless	Very Very Slightly Included	Very Slightly Included	Slightly Included	Included

**ADDITIONAL GRADING INFORMATION**

Polish **EXCELLENT**  
Symmetry **EXCELLENT**  
Fluorescence **NONE**  
Inscription(s) **IGI LG633479010**



**IGI**

August 14, 2024  
IGI Report No **LG633479010**  
**ROUND BRILLIANT**  
6.50 - 6.52 X 4.06 MM  
1.04 CARAT  
Color Grade **I**  
Clarity Grade **VVS 2**  
Cut Grade **IDEAL**  
Depth **62.3%**  
Table **15%**  
Girdle **Medium To Slightly Thick**  
Culet **Pointed**  
Polish **EXCELLENT**  
Symmetry **EXCELLENT**  
Fluorescence **NONE**  
Inscriptions(s) **IGI LG633479010**