



**ELECTRONIC COPY**

LG633478219

Report verification at [igi.org](http://igi.org)

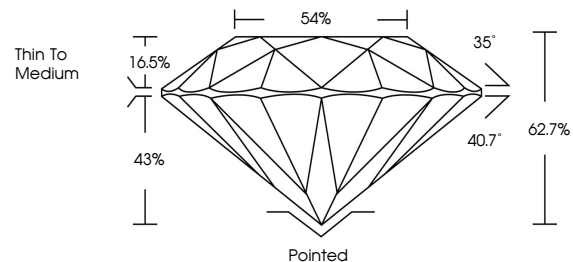
**LABORATORY GROWN DIAMOND REPORT**

May 23, 2024  
 IGI Report Number **LG633478219**  
 Description **LABORATORY GROWN DIAMOND**  
 Shape and Cutting Style **ROUND BRILLIANT**  
 Measurements **8.09 - 8.10 X 5.07 MM**  
**GRADING RESULTS**  
 Carat Weight **2.03 CARATS**  
 Color Grade **H**  
 Clarity Grade **VVS 2**  
 Cut Grade **IDEAL**

**ADDITIONAL GRADING INFORMATION**

Polish **EXCELLENT**  
 Symmetry **EXCELLENT**  
 Fluorescence **NONE**  
 Inscription(s) **LG633478219**

**PROPORTIONS**



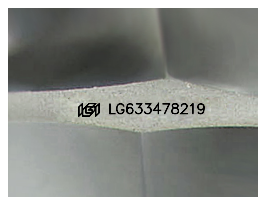
**GRADING SCALES**

**CLARITY**

IF	VVS <sup>1-2</sup>	VS <sup>1-2</sup>	SI <sup>1-2</sup>	I <sup>1-3</sup>
Internally Flawless	Very Very Slightly Included	Very Slightly Included	Slightly Included	Included

**COLOR**

D	E	F	G	H	I	J	Faint	Very Light	Light
---	---	---	---	---	---	---	-------	------------	-------

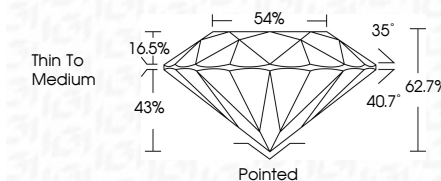


Sample Image Used

May 23, 2024  
 IGI Report Number **LG633478219**  
 Description **LABORATORY GROWN DIAMOND**  
 Shape and Cutting Style **ROUND BRILLIANT**  
 Measurements **8.09 - 8.10 X 5.07 MM**  
**GRADING RESULTS**  
 Carat Weight **2.03 CARATS**  
 Color Grade **H**  
 Clarity Grade **VVS 2**  
 Cut Grade **IDEAL**

**ADDITIONAL GRADING INFORMATION**

Polish **EXCELLENT**  
 Symmetry **EXCELLENT**  
 Fluorescence **NONE**  
 Inscription(s) **LG633478219**



**IGI**

May 23, 2024  
 IGI Report No **LG633478219**  
**ROUND BRILLIANT**  
 Carat Weight **2.03 CARATS**  
 Color Grade **H**  
 Clarity Grade **VVS 2**  
 Depth **IDEAL**  
 Table **62.7%**  
 Girdle **54%**  
 Height **43%**  
 Thin To Medium  
 Culet **Pointed**  
 Polish **EXCELLENT**  
 Symmetry **EXCELLENT**  
 Fluorescence **NONE**  
 Inscription(s) **LG633478219**