



**ELECTRONIC COPY**

LG633478189

Report verification at [igi.org](http://igi.org)

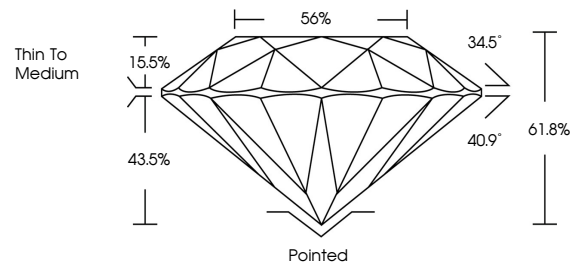
**LABORATORY GROWN DIAMOND REPORT**

May 23, 2024  
 IGI Report Number **LG633478189**  
 Description **LABORATORY GROWN DIAMOND**  
 Shape and Cutting Style **ROUND BRILLIANT**  
 Measurements **7.72 - 7.73 X 4.77 MM**  
**GRADING RESULTS**  
 Carat Weight **1.73 CARAT**  
 Color Grade **F**  
 Clarity Grade **VVS 1**  
 Cut Grade **IDEAL**

**ADDITIONAL GRADING INFORMATION**

Polish **EXCELLENT**  
 Symmetry **EXCELLENT**  
 Fluorescence **NONE**  
 Inscription(s)  **LG633478189**

**PROPORTIONS**



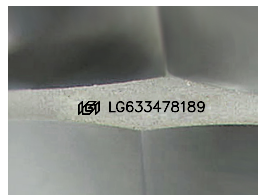
**GRADING SCALES**

**CLARITY**

IF	VVS <sup>1-2</sup>	VS <sup>1-2</sup>	SI <sup>1-2</sup>	I <sup>1-3</sup>
Internally Flawless	Very Very Slightly Included	Very Slightly Included	Slightly Included	Included

**COLOR**

D	E	F	G	H	I	J	Faint	Very Light	Light
---	---	---	---	---	---	---	-------	------------	-------

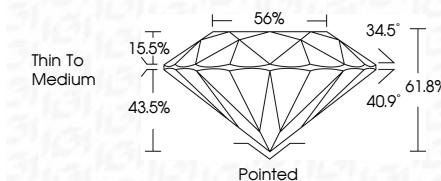


Sample Image Used

May 23, 2024  
 IGI Report Number **LG633478189**  
 Description **LABORATORY GROWN DIAMOND**  
 Shape and Cutting Style **ROUND BRILLIANT**  
 Measurements **7.72 - 7.73 X 4.77 MM**  
**GRADING RESULTS**  
 Carat Weight **1.73 CARAT**  
 Color Grade **F**  
 Clarity Grade **VVS 1**  
 Cut Grade **IDEAL**

**ADDITIONAL GRADING INFORMATION**

Polish **EXCELLENT**  
 Symmetry **EXCELLENT**  
 Fluorescence **NONE**  
 Inscription(s)  **LG633478189**



**IGI**

May 23, 2024	IGI Report No LG633478189	1.73 CARAT	F	VVS 1	IDEAL	61.8%	56%	Thin To Medium	Pointed	EXCELLENT	EXCELLENT	NONE	LG633478189
ROUND BRILLIANT	7.72 - 7.73 X 4.77 MM	Color Grade	Cut Grade	Depth	Table	Girdle				Polish	Symmetry	Fluorescence	Inscription(s)