



**ELECTRONIC COPY**

LG633478159

Report verification at [igi.org](http://igi.org)

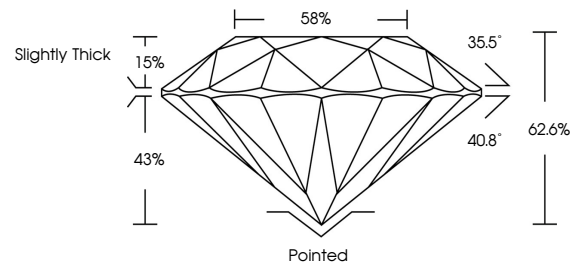
**LABORATORY GROWN DIAMOND REPORT**

May 23, 2024  
 IGI Report Number **LG633478159**  
 Description **LABORATORY GROWN DIAMOND**  
 Shape and Cutting Style **ROUND BRILLIANT**  
 Measurements **7.66 - 7.66 X 4.80 MM**  
**GRADING RESULTS**  
 Carat Weight **1.76 CARAT**  
 Color Grade **I**  
 Clarity Grade **VVS 2**  
 Cut Grade **EXCELLENT**

**ADDITIONAL GRADING INFORMATION**

Polish **EXCELLENT**  
 Symmetry **EXCELLENT**  
 Fluorescence **NONE**  
 Inscription(s) **IGI LG633478159**

**PROPORTIONS**



**GRADING SCALES**

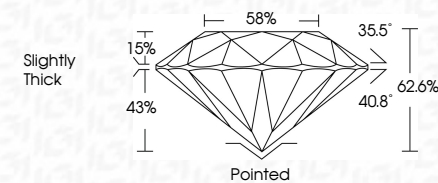
**CLARITY**

IF	VVS <sup>1-2</sup>	VS <sup>1-2</sup>	SI <sup>1-2</sup>	I <sup>1-3</sup>
Internally Flawless	Very Very Slightly Included	Very Slightly Included	Slightly Included	Included

**COLOR**

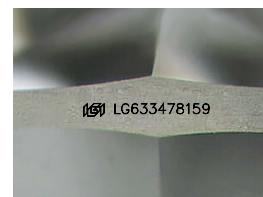
D	E	F	G	H	I	J	Faint	Very Light	Light
---	---	---	---	---	---	---	-------	------------	-------

May 23, 2024  
 IGI Report Number **LG633478159**  
 Description **LABORATORY GROWN DIAMOND**  
 Shape and Cutting Style **ROUND BRILLIANT**  
 Measurements **7.66 - 7.66 X 4.80 MM**  
**GRADING RESULTS**  
 Carat Weight **1.76 CARAT**  
 Color Grade **I**  
 Clarity Grade **VVS 2**  
 Cut Grade **EXCELLENT**



**ADDITIONAL GRADING INFORMATION**

Polish **EXCELLENT**  
 Symmetry **EXCELLENT**  
 Fluorescence **NONE**  
 Inscription(s) **IGI LG633478159**



Sample Image Used



**IGI**

May 23, 2024	IGI Report No LG633478159	ROUND BRILLIANT	1.76 CARAT	I	VVS 2	EXCELLENT	62.6%	88%	Slightly Thick	Pointed	EXCELLENT	EXCELLENT	NONE	IGI LG633478159
			Carat Weight	Color Grade	Clarity Grade	Depth	Table	Girdle		Culet	Polish	Symmetry	Fluorescence	Inscription(s)