



ELECTRONIC COPY

LG633478108

Report verification at igi.org

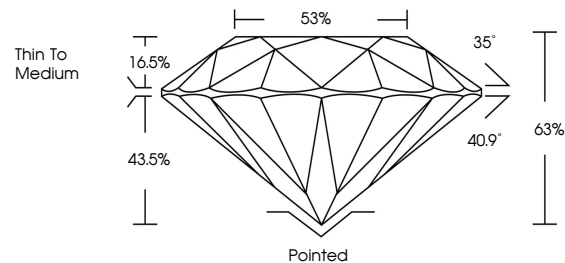
LABORATORY GROWN DIAMOND REPORT

May 23, 2024
 IGI Report Number **LG633478108**
 Description **LABORATORY GROWN DIAMOND**
 Shape and Cutting Style **ROUND BRILLIANT**
 Measurements **7.43 - 7.46 X 4.69 MM**
GRADING RESULTS
 Carat Weight **1.57 CARAT**
 Color Grade **G**
 Clarity Grade **VVS 1**
 Cut Grade **EXCELLENT**

ADDITIONAL GRADING INFORMATION

Polish **EXCELLENT**
 Symmetry **EXCELLENT**
 Fluorescence **NONE**
 Inscription(s) **LG633478108**

PROPORTIONS



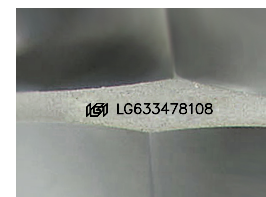
GRADING SCALES

CLARITY

IF	VVS ¹⁻²	VS ¹⁻²	SI ¹⁻²	I ¹⁻³
Internally Flawless	Very Very Slightly Included	Very Slightly Included	Slightly Included	Included

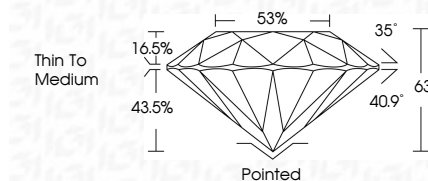
COLOR

D	E	F	G	H	I	J	Faint	Very Light	Light
---	---	---	---	---	---	---	-------	------------	-------



Sample Image Used

May 23, 2024
 IGI Report Number **LG633478108**
 Description **LABORATORY GROWN DIAMOND**
 Shape and Cutting Style **ROUND BRILLIANT**
 Measurements **7.43 - 7.46 X 4.69 MM**
GRADING RESULTS
 Carat Weight **1.57 CARAT**
 Color Grade **G**
 Clarity Grade **VVS 1**
 Cut Grade **EXCELLENT**



ADDITIONAL GRADING INFORMATION

Polish **EXCELLENT**
 Symmetry **EXCELLENT**
 Fluorescence **NONE**
 Inscription(s) **LG633478108**



IGI



May 23, 2024
 IGI Report No LG633478108
ROUND BRILLIANT
 7.43 - 7.46 X 4.69 MM
 Carat Weight **1.57 CARAT**
 Color Grade **G**
 Clarity Grade **VVS 1**
 Cut Grade **EXCELLENT**
 Depth **63%**
 Table **16.5%**
 Girdle **53%**
 Pavilion Angle **40.9°**
 Crown Angle **35°**
 Thin To Medium
 Culet **Pointed**
 Polish **EXCELLENT**
 Symmetry **EXCELLENT**
 Fluorescence **NONE**
 Inscription(s) **LG633478108**