



**ELECTRONIC COPY**

LG633448150  
Report verification at igi.org

**LABORATORY GROWN DIAMOND REPORT**

May 16, 2024  
IGI Report Number **LG633448150**  
Description **LABORATORY GROWN DIAMOND**  
Shape and Cutting Style **PRINCESS CUT**  
Measurements **7.53 X 7.17 X 5.41 MM**

**GRADING RESULTS**

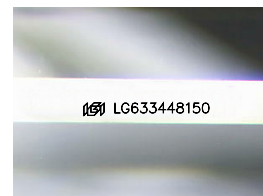
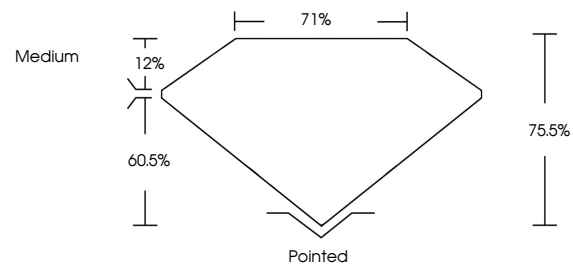
Carat Weight **2.51 CARATS**  
Color Grade **F**  
Clarity Grade **VVS 2**

**ADDITIONAL GRADING INFORMATION**

Polish **EXCELLENT**  
Symmetry **EXCELLENT**  
Fluorescence **NONE**  
Inscription(s) **IGI LG633448150**

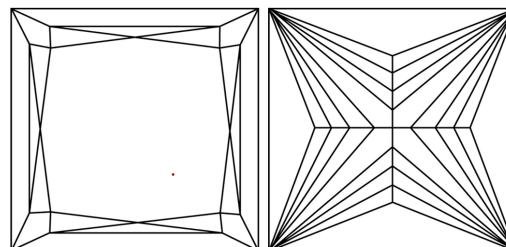
Comments: This Laboratory Grown Diamond was created by Chemical Vapor Deposition (CVD) growth process and may include post-growth treatment. Type IIa

**PROPORTIONS**



Sample Image Used

**CLARITY CHARACTERISTICS**



**KEY TO SYMBOLS**

Red symbols indicate internal characteristics.  
Green symbols indicate external characteristics.

**COLOR**

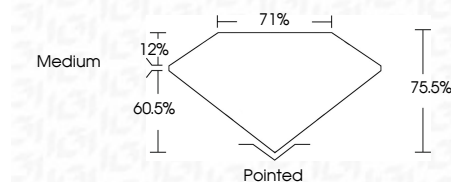
D E F G H I J Faint Very Light Light

**CLARITY**

IF	VS <sup>1-2</sup>	VS <sup>1-2</sup>	SI <sup>1-2</sup>	I <sup>1-3</sup>
Internally Flawless	Very Very Slightly Included	Very Slightly Included	Slightly Included	Included



May 16, 2024  
IGI Report Number **LG633448150**  
Description **LABORATORY GROWN DIAMOND**  
Shape and Cutting Style **PRINCESS CUT**  
Measurements **7.53 X 7.17 X 5.41 MM**  
**GRADING RESULTS**  
Carat Weight **2.51 CARATS**  
Color Grade **F**  
Clarity Grade **VVS 2**



**ADDITIONAL GRADING INFORMATION**

Polish **EXCELLENT**  
Symmetry **EXCELLENT**  
Fluorescence **NONE**  
Inscription(s) **IGI LG633448150**  
Comments: This Laboratory Grown Diamond was created by Chemical Vapor Deposition (CVD) growth process and may include post-growth treatment. Type IIa



**IGI**

May 16, 2024  
IGI Report No. LG633448150  
**PRINCESS CUT**  
7.53 X 7.17 X 5.41 MM  
2.51 CARATS  
F  
VVS 2  
75.5%  
71%  
Medium  
Pointed  
EXCELLENT  
EXCELLENT  
NONE  
IGI LG633448150

Comments: This Laboratory Grown Diamond was created by Chemical Vapor Deposition (CVD) growth process and may include post-growth treatment. Type IIa