

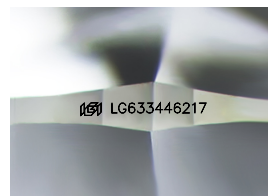
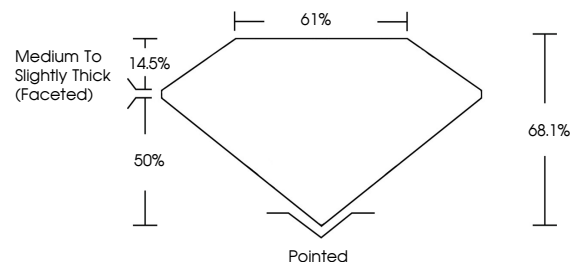


ELECTRONIC COPY

LABORATORY GROWN DIAMOND REPORT

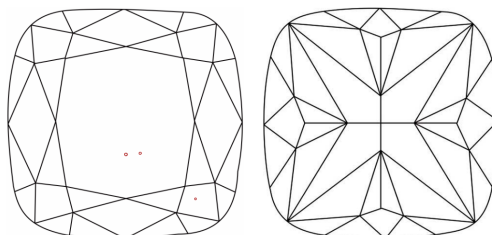
LG633446217
Report verification at lgi.org

PROPORTIONS



Sample Image Used

CLARITY CHARACTERISTICS



KEY TO SYMBOLS

Red symbols indicate internal characteristics.
Green symbols indicate external characteristics.

COLOR

D E F G H I J Faint Very Light Light

CLARITY

IF	VVS ^{1,2}	VS ^{1,2}	SI ^{1,2}	I ^{1,3}
Internally Flawless	Very Very Slightly Included	Very Slightly Included	Slightly Included	Included



© IGI 2020, International Gemological Institute

FD - 10 20

DIAMOND REPORT



May 14, 2024

IGI Report Number **LG633446217**Description **LABORATORY GROWN DIAMOND**Shape and Cutting Style **SQUARE CUSHION BRILLIANT**

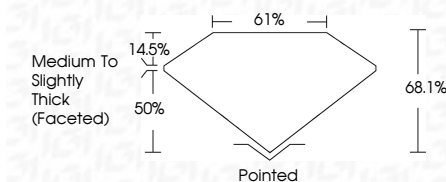
Measurements 5.79 X 5.68 X 3.87 MM

GRADING RESULTS

Carat Weight 1.02 CARAT

Color Grade

Clarity Grade VS 1



ADDITIONAL GRADING INFORMATION

Polish **EXCELLENT**Symmetry **EXCELLENT**Fluorescence **NONE**Inscription(s) LG633446217

Comments: This Laboratory Grown Diamond was created by Chemical Vapor Deposition (CVD) growth process and may include post-growth treatment.
Type IIa



May 14, 2024	1.02 CARAT	Vs 1	68.1%	0.1%	Medium to Slightly Thick (Faceted)	Polished	EXCELLENT	EXCELLENT	NONE	#61LG53446217
GI Report No. LG53446217	Color Weight	Color Grade	Clarity Grade	Depth	Gtable	Grade	Quiet	Polish	Symmetry	Fluorescence
SQUARE CUSHION BRILLIANT	9.79 x 7.79 x 5.68 x 3.87 MM									inscription(s)

Comments:

The Laboratory Grown Diamond was created using a high-pressure, high-temperature (HPHT) growth process and may include post-growth treatment.

Type Ila