



ELECTRONIC COPY

LG633433909
Report verification at igi.org

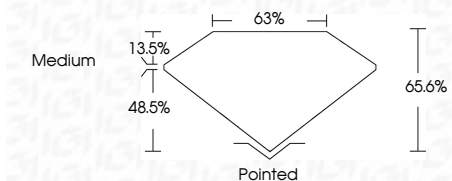


May 14, 2024
IGI Report Number **LG633433909**
Description **LABORATORY GROWN DIAMOND**
Shape and Cutting Style **CUT CORNERED
RECTANGULAR MODIFIED
BRILLIANT**

Measurements **8.88 X 5.90 X 3.87 MM**

GRADING RESULTS

Carat Weight **1.80 CARAT**
Color Grade **FANCY VIVID BLUE**
Clarity Grade **VS 1**



ADDITIONAL GRADING INFORMATION

Polish **EXCELLENT**
Symmetry **EXCELLENT**
Fluorescence **VERY SLIGHT**
Inscription(s) **IGI LG633433909**

Comments: This Laboratory Grown Diamond was created by Chemical Vapor Deposition (CVD) growth process. Indications of post-growth treatment.



IGI

May 14, 2024
IGI Report No. LG633433909
CUT CORNERED RECT. MODIFIED BRILLIANT
8.88 X 5.90 X 3.87 MM
1.80 CARAT
FANCY VIVID BLUE
VS 1
65.6%
63%
Medium
Pointed
EXCELLENT
EXCELLENT
VERY SLIGHT
IGI LG633433909

Comments: This Laboratory Grown Diamond was created by Chemical Vapor Deposition (CVD) growth process. Indications of post-growth treatment.

LABORATORY GROWN DIAMOND REPORT

May 14, 2024
IGI Report Number **LG633433909**
Description **LABORATORY GROWN DIAMOND**
Shape and Cutting Style **CUT CORNERED RECTANGULAR
MODIFIED BRILLIANT**
Measurements **8.88 X 5.90 X 3.87 MM**

GRADING RESULTS

Carat Weight **1.80 CARAT**
Color Grade **FANCY VIVID BLUE**
Clarity Grade **VS 1**

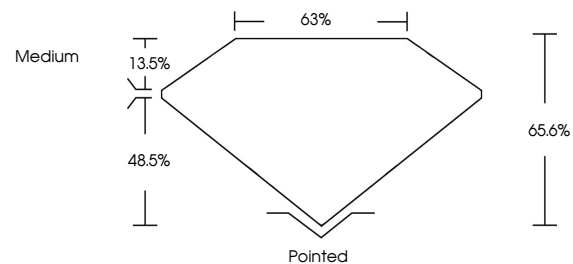
ADDITIONAL GRADING INFORMATION

Polish **EXCELLENT**
Symmetry **EXCELLENT**
Fluorescence **VERY SLIGHT**

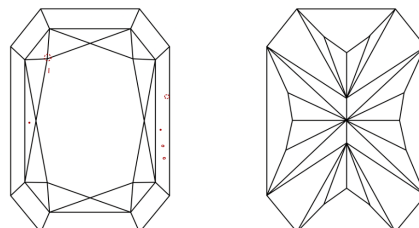
Inscription(s) **IGI LG633433909**

Comments: This Laboratory Grown Diamond was created by Chemical Vapor Deposition (CVD) growth process. Indications of post-growth treatment.

PROPORTIONS

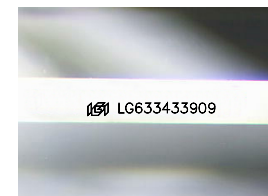


CLARITY CHARACTERISTICS



KEY TO SYMBOLS

Red symbols indicate internal characteristics.
Green symbols indicate external characteristics.



Sample Image Used

COLOR

D E F G H I J Faint Very Light Light

CLARITY

IF	VS ¹⁻²	VS ¹⁻²	SI ¹⁻²	I ¹⁻³
Internally Flawless	Very Very Slightly Included	Very Slightly Included	Slightly Included	Included

