

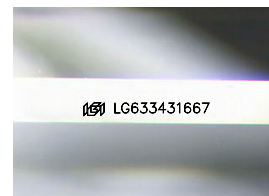
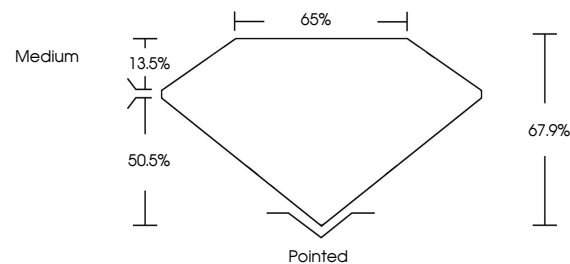


ELECTRONIC COPY

LABORATORY GROWN DIAMOND REPORT

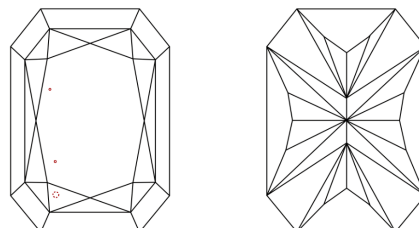
LG633431667
Report verification at lgi.org

PROPORTIONS



Sample Image Used

CLARITY CHARACTERISTICS



KEY TO SYMBOLS

Red symbols indicate internal characteristics.
Green symbols indicate external characteristics.

COLOR

D E F G H I J Faint Very Light Light

CLARITY

IF	VVS ¹⁻²	VS ¹⁻²	SI ¹⁻²	I ¹⁻³
Internally Flawless	Very Very Slightly Included	Very Slightly Included	Slightly Included	Included



© IGI 2020, International Gemological Institute

FD - 10 20

www.igi.org

DIAMOND REPORT



May 15, 2024

IGI Report Number **LG633431667**Description **LABORATORY GROWN DIAMOND**

Shape and Cutting Style

CUT CORNERED
RECTANGULAR MODIFIED
BRILLIANT

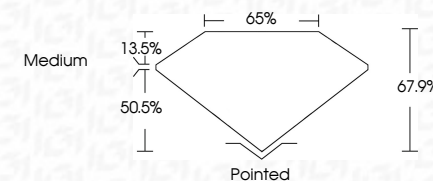
Measurements **8.20 X 5.73 X 3.89 MM**

GRADING RESULTS

Carat Weight 1.57 CARAT

Color Grade E

Clarity Grade VS 1



ADDITIONAL GRADING INFORMATION

Polish **EXCELLENT**Symmetry **EXCELLENT**Fluorescence **NONE**Inscription(s) LG633431667

Comments: This Laboratory Grown Diamond was created by Chemical Vapor Deposition (CVD) growth process and may include post-growth treatment.
Type IIa



May 15, 2024	CU CORNBED RECT. MODIFIED BRILLANT
GI REPORT NO. LG33343.1657	
3.20 X 5.75 X 3.89 MM	
Carat Weight	1.57 CARAT
Color Grade	E
Clarity Grade	Vs 1
Depth	61.7%
Table	65%
Girdle	Medium
Culet	Pointed
Polish	EXCELLENT
Symmetry	EXCELLENT
Fluorescence	NONE
Inscription(s)	lg33343.1657

Comments:

The Laboratory Crown Diamond was a CVD growth process and may include post-growth treatment.

Type Ila