

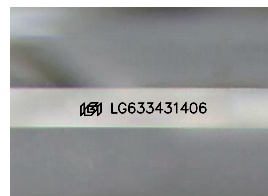
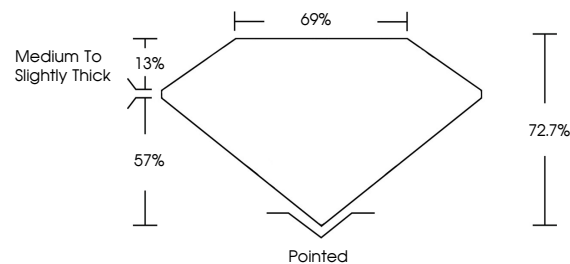


**ELECTRONIC COPY**

## LABORATORY GROWN DIAMOND REPORT

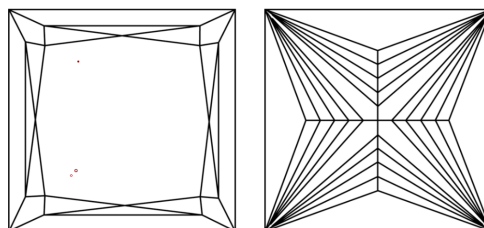
LG633431406  
Report verification at [igi.org](https://igi.org)

## PROPORTIONS



Sample Image Used

## CLARITY CHARACTERISTICS



## KEY TO SYMBOLS

Red symbols indicate internal characteristics.  
Green symbols indicate external characteristics.

## COLOR

D E F G H I J Faint Very Light Light

## CLARITY

IF	VVS <sup>1-2</sup>	VS <sup>1-2</sup>	SI <sup>1-2</sup>	I <sup>1-3</sup>
Internally Flawless	Very Very Slightly Included	Very Slightly Included	Slightly Included	Included



© IGI 2020, International Gemological Institute

FD - 10 20

**www.igi.org**

## DIAMOND REPORT



May 14, 2024

IGI Report Number **LG633431406**Description **LABORATORY GROWN DIAMOND**

Shape and Cutting Style **PRINCESS CUT**

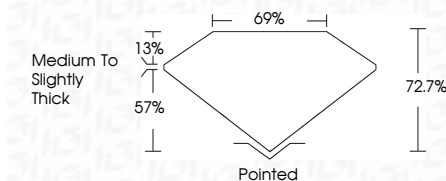
Measurements 5.58 X 5.45 X 3.96 MM

## GRADING RESULTS

Carat Weight 1.05 CARAT

Color Grade	D
-------------	---

Clarity Grade VS 1



### ADDITIONAL GRADING INFORMATION

Polish **EXCELLENT**Symmetry **EXCELLENT**Fluorescence **NONE**Inscription(s)  LG633431406

Comments: This Laboratory Grown Diamond was created by Chemical Vapor Deposition (CVD) growth process and may include post-growth treatment.  
Type IIa



IG

May 14, 2024  
GI Report No LG633431406  
PRINCESS CUT

5.59 X 5.45 X 3.96 MM	Carat Weight Color Grade Clarity Grade	1.05 CARAT D VS 1 72-7% 69% Medium To Slightly Tinted
	Depth Table Girdle	Pointed EXCELLENT EXCELLENT NONE Serial GSA3343105
	Polish Symmetry Fluorescence Comments(s)	

**Comments:**  
This Laboratory Grown Diamond was created by Chemical Vapor Deposition (CVD) growth process and may include post-growth treatment.