

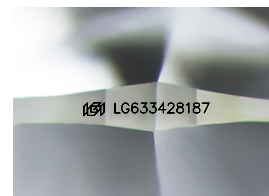
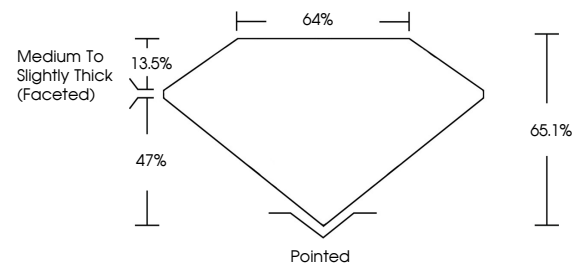


ELECTRONIC COPY

LABORATORY GROWN DIAMOND REPORT

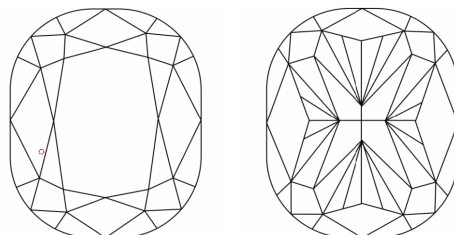
LG633428187
Report verification at lgi.org

PROPORTIONS



Sample Image Used

CLARITY CHARACTERISTICS



KEY TO SYMBOLS

Red symbols indicate internal characteristics.
Green symbols indicate external characteristics.

COLOR

D E F G H I J Faint Very Light Light

CLARITY

IF	VVS ^{1,2}	VS ^{1,2}	SI ^{1,2}	I ^{1,3}
Internally Flawless	Very Very Slightly Included	Very Slightly Included	Slightly Included	Included



© IGI 2020, International Gemological Institute

FD - 10 20

www.igi.org

DIAMOND REPORT



May 10, 2024

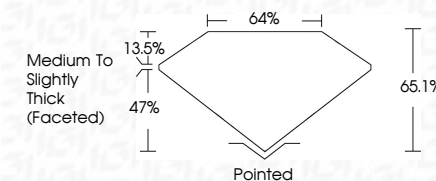
IGI Report Number **LG633428187**Description **LABORATORY GROWN DIAMOND**Shape and Cutting Style **CUSHION BRILLIANT**

Measurements 7.55 X 6.21 X 4.04 MM

GRADING RESULTS

Carat Weight 1.59 CARAT

Color Grade

Clarity Grade WS 2

ADDITIONAL GRADING INFORMATION

Polish **EXCELLENT**Symmetry **EXCELLENT**Fluorescence **NONE**Inscription(s) LG633428187

Comments: This Laboratory Grown Diamond was created by Chemical Vapor Deposition (CVD) growth process and may include post-growth treatment.
Type IIa



May 10, 2024	GI Report No LG43428187	1.55 CARAT	D	VVS 2	65.1 %	64%	Medium to Slightly Thick Faceted	Poished	EXCELLENT	EXCELLENT	NONE	(#) LG43428187
FUSION BRILLIANT	1.65 X .65 X 4.21 X 4.04 MM	Color Weight	Color Grade	Clarity Grade	Table	Girdle	Medium to Slightly Thick Faceted	Culet	Polish	Symmetry	Fluorescence	Inscriptions(s)

Comments:

The Laboratory Crown Diamond was grown from a CVD growth process and may include post-growth treatment.

Type Ila