



**ELECTRONIC COPY**

## LABORATORY GROWN DIAMOND REPORT

|                         |                          |
|-------------------------|--------------------------|
| May 14, 2024            |                          |
| IGI Report Number       | LG633427428              |
| Description             | LABORATORY GROWN DIAMOND |
| Shape and Cutting Style | ROUND BRILLIANT          |
| Measurements            | 10.14 - 10.21 X 6.34 MM  |
| GRADING RESULTS         |                          |
| Carat Weight            | 4.10 CARATS              |
| Color Grade             | G                        |
| Clarity Grade           | VS 1                     |
| Cut Grade               | IDEAL                    |

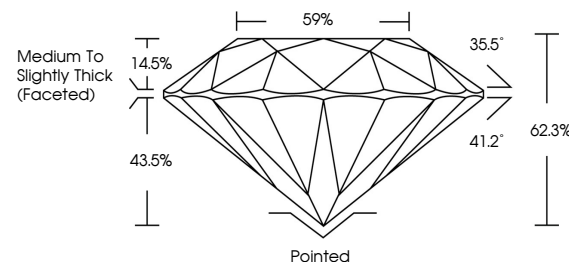
### ADDITIONAL GRADING INFORMATION

|                |                |
|----------------|----------------|
| Polish         | EXCELLENT      |
| Symmetry       | EXCELLENT      |
| Fluorescence   | NONE           |
| Inscription(s) | 15 LG633427428 |

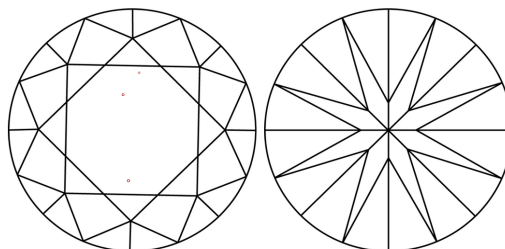
Comments: This Laboratory Grown Diamond was created by Chemical Vapor Deposition (CVD) growth process and may include post-growth treatment.  
Type IIa

LG633427428  
Report verification at [lgi.org](https://lgi.org)

## PROPORTIONS

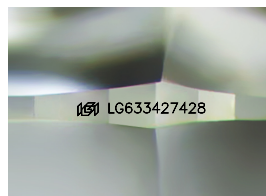


## CLARITY CHARACTERISTICS



### KEY TO SYMBOLS

Red symbols indicate internal characteristics.  
Green symbols indicate external characteristics.



Sample Image Used

## COLOR

D E F G H I J Faint Very Light Light

## CLARITY

| IF                  | VVS <sup>1-2</sup>          | VS <sup>1-2</sup>      | SI <sup>1-2</sup> | I <sup>1-3</sup> |
|---------------------|-----------------------------|------------------------|-------------------|------------------|
| Internally Flawless | Very Very Slightly Included | Very Slightly Included | Slightly Included | Included         |



© IGI 2020, International Gemological Institute

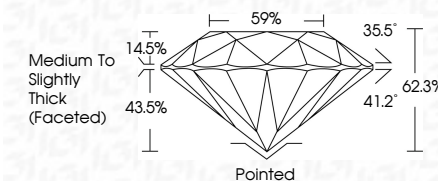
FD - 10 20

**www.igi.org**

DIAMOND REPORT



|                         |                          |
|-------------------------|--------------------------|
| May 14, 2024            |                          |
| IGI Report Number       | LG63342728               |
| Description             | LABORATORY GROWN DIAMOND |
| Shape and Cutting Style | ROUND BRILLIANT          |
| Measurements            | 10.14 - 10.21 X 6.34 MM  |
| GRADING RESULTS         |                          |
| Carat Weight            | 4.10 CARATS              |
| Color Grade             | G                        |
| Clarity Grade           | VS 1                     |
| Cut Grade               | IDEAL                    |



### ADDITIONAL GRADING INFORMATION

|                |  |
|----------------|--|
| Polish         | EXCELLENT  |
| Symmetry       | EXCELLENT  |
| Fluorescence   | NONE   |
| Inscription(s) |  LG-633427428 |

Comments: This Laboratory Grown Diamond was created by Chemical Vapor Deposition (CVD) growth process and may include post-growth treatment.  
Type IIa



|  |                                    |
|--|------------------------------------|
| May 14, 2024   | 4.10 CARATS                        |
| GI Report No LG533427428   |                                    |
| ROUND BRILLIANT  |                                    |
| 10.14 - 10.21 X 6.34 MM  |                                    |
| Carat Weight   | Vs 1                               |
| Color Grade  | IDEAL                              |
|  | 62.3%                              |
|  | 87%                                |
|  | Medium to Slightly Thick (Faceted) |
|  | Polished                           |
|  | EXCELLENT                          |
|  | EXCELLENT                          |
|  | NONE                               |
|  | 881 LG533427428                    |
| Comments:  |                                    |
| This Laboratory Grown Diamond was created by Chemical Vapor Deposition (CVD) growth process and may include post-growth treatment. |                                    |