



ELECTRONIC COPY

LABORATORY GROWN DIAMOND REPORT

May 10, 2024	
IGI Report Number	LG633413373
Description	LABORATORY GROWN DIAMOND
Shape and Cutting Style	CUT CORNERED RECTANGULAR MODIFIED BRILLIANT
Measurements	9.20 X 6.20 X 4.17 MM

GRADING RESULTS

Carat Weight	2.06 CARATS
Color Grade	E
Clarity Grade	VS 1

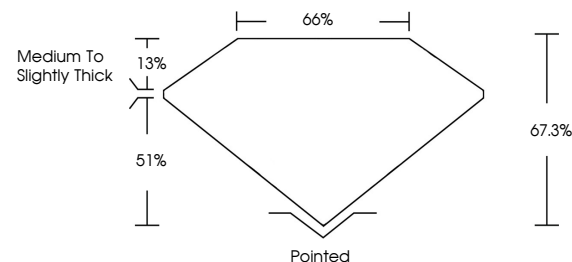
ADDITIONAL GRADING INFORMATION

Polish	EXCELLENT
Symmetry	EXCELLENT
Fluorescence	NONE
Inscription(s)	 LG633413373

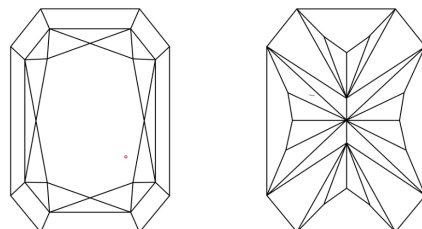
Comments: This Laboratory Grown Diamond was created by Chemical Vapor Deposition (CVD) growth process and may include post-growth treatment.
Type IIa

LG633413373
Report verification at lgi.org

PROPORTIONS

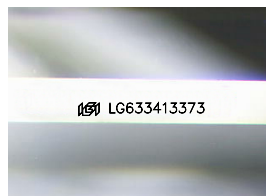


CLARITY CHARACTERISTICS



KEY TO SYMBOLS

Red symbols indicate internal characteristics.
Green symbols indicate external characteristics.



Sample Image Used

COLOR

D E F G H I J Faint Very Light Light

CLARITY

IF	VVS ¹⁻²	VS ¹⁻²	SI ¹⁻²	I ¹⁻³
Internally Flawless	Very Very Slightly Included	Very Slightly Included	Slightly Included	Included



© IGI 2020, International Gemological Institute

FD - 10 20

www.igi.org

DIAMOND REPORT



May 10, 2024

IGI Report Number **LG633413373**

Description	LABORATORY GROWN DIAMOND
-------------	--------------------------

Shape and Cutting Style

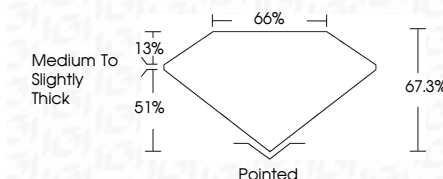
Measurements 9.20 X 6.20 X 4.17 MM

GRADING RESULTS

Carat Weight **2.06 CARATS**

Color Grade E

Clarity Grade VS 1



ADDITIONAL GRADING INFORMATION

Polish **EXCELLENT**Symmetry **EXCELLENT**Fluorescence **NONE**Inscription(s) LG633413373

Comments: This Laboratory Grown Diamond was created by Chemical Vapor Deposition (CVD) growth process and may include post-growth treatment.
Type IIa



May 10, 2024	GI REPORTED RECT. MODIFIED BRILLIANT	2.05 CARATS	VVS 1	67.5%	66%	Medium To Slightly Thick	Polished	EXCELLENT	EXCELLENT	NONE	#61LG583413373
	CU CORNBED RECT. MODIFIED BRILLIANT										
	20.20 X 4.20 X 4.17 MM										
	Carat Weight										
	Color Grade										
	Clarity Grade										
	Depth										
	Table										
	Grade										
	Quiet										
	Polish										
	Symmetry										
	Fluorescence										
	Inscription(s)										

Comments:

The Laboratory Crown Diamond was
 grown using a High Pressure High Temperature
 (HPHT) growth process and may include
 post-growth treatment.

Type IIA