



ELECTRONIC COPY

LABORATORY GROWN DIAMOND REPORT

| | |
|-------------------------|--|
| May 9, 2024 | |
| IGI Report Number | LG633411453 |
| Description | LABORATORY GROWN DIAMOND |
| Shape and Cutting Style | CUT CORNERED RECTANGULAR MODIFIED BRILLIANT |
| Measurements | 8.17 X 5.77 X 3.99 MM |

GRADING RESULTS

| | |
|---------------|------------|
| Carat Weight | 1.54 CARAT |
| Color Grade | D |
| Clarity Grade | VS 1 |

ADDITIONAL GRADING INFORMATION

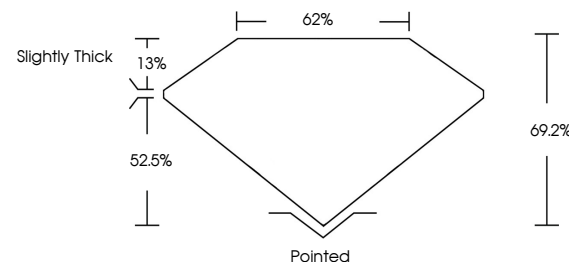
| | |
|--------------|-----------|
| Polish | EXCELLENT |
| Symmetry | EXCELLENT |
| Fluorescence | NONE |

Inscription(s)  LG633411453

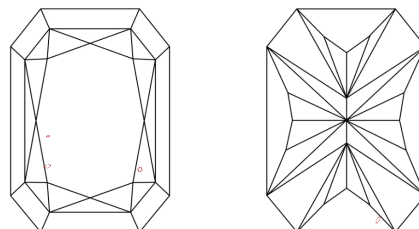
Comments: This Laboratory Grown Diamond was created by Chemical Vapor Deposition (CVD) growth process and may include post-growth treatment.
Type IIa

LG633411453
Report verification at lgi.org

PROPORTIONS

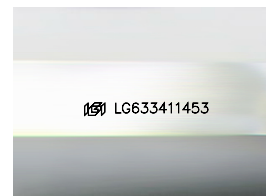


CLARITY CHARACTERISTICS



KEY TO SYMBOLS

Red symbols indicate internal characteristics.
Green symbols indicate external characteristics.



Sample Image Used

COLOR

D E F G H I J Faint Very Light Light

CLARITY

| IF | VVS ^{1,2} | VS ^{1,2} | SI ^{1,2} | I ^{1,3} |
|---------------------|-----------------------------|------------------------|-------------------|------------------|
| Internally Flawless | Very Very Slightly Included | Very Slightly Included | Slightly Included | Included |



© IGI 2020, International Gemological Institute

FD - 10 20

www.igi.org

DIAMOND REPORT



May 9, 2024

IGI Report Number LG633411453

Description **LABORATORY GROWN DIAMOND**

Shape and Cutting Style

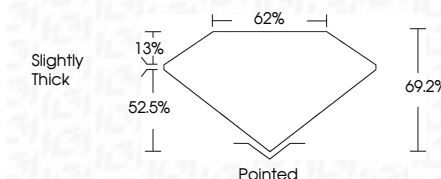
Measurements 8.17 X 5.77 X 3.99 MM

GRADING RESULTS

Carat Weight 1.54 CARAT

Color Grade

Clarity Grade VS 1



ADDITIONAL GRADING INFORMATION

Polish **EXCELLENT**

Symmetry **EXCELLENT**

Fluorescence **NONE**Inscription(s)  LG633411453

Comments: This Laboratory Grown Diamond was created by Chemical Vapor Deposition (CVD) growth process and may include post-growth treatment.
Type IIa



| | | |
|---|-----------------|--------------|
| May 9, 2024 | GL Report No | CUT CORNERED |
| 3.17 X 5.77 X 3.3 | Carat Weight | |
| | Color Grade | |
| | Clarity Grade | |
| | Depth | |
| | Table | |
| | Grade | |
| | Culet | |
| | Polish | |
| | Symmetry | |
| | Fluorescence | |
| | Inscriptions(s) | |
| Comments: | | |
| This Laboratory created by CVD growth post-growth in type IIa | | |